

Product datasheet for PH300411

TGFBI (NM_000358) Human Mass Spec Standard

Product data:

Product Type:	Mass Spec Standards
Description:	TGFBI MS Standard C13 and N15-labeled recombinant protein (NP_000349)
Species:	Human
Expression Host:	HEK293
Expression cDNA Clone or AA Sequence:	RC200411
Predicted MW:	74.7 kDa
Protein Sequence:	>RC200411 protein sequence Red=Cloning site Green=Tags(s)

MALFVRLALALALALGPAATLAGPAKSPYQLVLQHSRLRGRQHGPNVCAVQKVI GTNRKYFTNCKQWYQ
RKICGKSTVISYECCPGYEKVPGEKGCPAALPLSNLYETLGVVGSSTTQLYDRTEKLRPEMEGPGSFTI
FAPSNEAWASLPAEVLDSLVSNNIELLNRYHMGRRVLTDELKHGMLTSMYQNSNIQIHHYPNGIV
TVNCARLLKADHATNGVVHLIDKVI STITNNIQIIEIEDTFETLRAAVAASGLNTMLEGNGQYTL LAP
TNEAFEKIPSETLNRILGDPEALRDLLNNHILKSAMCAEAI VAGLSVETLEGTTLEVGCSGDM LTINGKA
IISNKDILATNGVIHYIDELLIPDSAKTLFELAAESDVST AIDLFRQAGLGNHLSG SERL TLLAPLNSVF
KDGTPPIDAHRNLLRNHIKDKLASKYL YHGQTLET LGGKLRV FVYRNSL CIENSCIAAHDKRGRYGT
LFTMDRVLTPPMGTVM DVLKGDNRFSMLVA AIQSAGL TETLNREGVYTVFAPTNEAFRALPPRERSRL LG
DAKELANILKYHIGDEILVSGGIGALVRLKSLQGDKLEVSLKNNVSVNKEPVAEPDIMATNGVVHVITN
VLQPPANRPQERGDELADSALEIFKQASAFSRASQRSVRLAPVYQKLLERMKH

TRTRPLEQKLI SEEDLAANDILDYKDDDDKV

Tag:	C-Myc/DDK
Purity:	> 80% as determined by SDS-PAGE and Coomassie blue staining
Concentration:	>0.05 µg/µL as determined by microplate BCA method
Labeling Method:	Labeled with [U- 13C6, 15N4]-L-Arginine and [U- 13C6, 15N2]-L-Lysine
Buffer:	25 mM Tris-HCl, 100 mM glycine, pH 7.3
Storage:	Store at -80°C. Avoid repeated freeze-thaw cycles.
Stability:	Stable for 3 months from receipt of products under proper storage and handling conditions.
RefSeq:	NP_000349
RefSeq Size:	2805



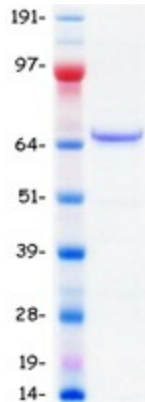
[View online »](#)

RefSeq ORF:	2049
Synonyms:	BIGH3; CDB1; CDG2; CDGG1; CSD; CSD1; CSD2; CSD3; EBMD; LCD1
Locus ID:	7045
UniProt ID:	Q15582 , A0A0S2Z4Q2
Cytogenetics:	5q31.1

Summary: This gene encodes an RGD-containing protein that binds to type I, II and IV collagens. The RGD motif is found in many extracellular matrix proteins modulating cell adhesion and serves as a ligand recognition sequence for several integrins. This protein plays a role in cell-collagen interactions and may be involved in endochondrial bone formation in cartilage. The protein is induced by transforming growth factor-beta and acts to inhibit cell adhesion. Mutations in this gene are associated with multiple types of corneal dystrophy. [provided by RefSeq, Jul 2008]

Protein Families: Druggable Genome, Secreted Protein, Transmembrane

Product images:



Coomassie blue staining of purified TGFBI protein (Cat# [TP300411]). The protein was produced from HEK293T cells transfected with TGFBI cDNA clone (Cat# [RC200411]) using MegaTran 2.0 (Cat# [TT210002]).