

Product datasheet for PH300408

gamma Tubulin (TUBG1) (NM_001070) Human Mass Spec Standard

Product data:

Product Type:	Mass Spec Standards
Description:	TUBG1 MS Standard C13 and N15-labeled recombinant protein (NP_001061)
Species:	Human
Expression Host:	HEK293
Expression cDNA Clone or AA Sequence:	RC200408
Predicted MW:	51.2 kDa
Protein Sequence:	>RC200408 protein sequence Red=Cloning site Green=Tags(s)

MPREIITLQLGQCGNQIGFEFWKQLCAEHGISPEGIVEEFATEGTRKDVFFYQADDEHYIPRAVLLDLE
PRVIHSILNSPYAKLYNPENIYLSEHGGGAGNNWASGFSQGEKIHEDIFDIIDREADGSDSLEGFVLCBS
IAGGTGSLGSLYLLERLNDRYPKKLVQTYSVFPNQDEMSDVVVQPYNSLLTLKRLTQNADCVVLDNTAL
NRIATDRLHIQNPSFSQINQLVSTIMSASTTLRYPGYMNNDLIGLIASLIPTPRLHFLMTGYTPLTTDQ
SVASVRKTTVLDVMRLLQPKNVMVSTGRDRQTNHCYIAILNIIQGEVDPQVHKSLQRIRERKLANFIP
WGPASIQVALSRKSPYLPSAHRVSGLMANHTSISLFFERTCRQYDKLRKREAFLEQFRKEDMFKDNFDE
MDTSREIVQQLIDEYHAATRPDIISWGTEQ

TRTRPLEQKLISEEDLAANDILDYKDDDDKV

Tag:	C-Myc/DDK
Purity:	> 80% as determined by SDS-PAGE and Coomassie blue staining
Concentration:	>0.05 µg/µL as determined by microplate BCA method
Labeling Method:	Labeled with [U- ¹³ C ₆ , ¹⁵ N ₄]-L-Arginine and [U- ¹³ C ₆ , ¹⁵ N ₂]-L-Lysine
Buffer:	25 mM Tris-HCl, 100 mM glycine, pH 7.3
Storage:	Store at -80°C. Avoid repeated freeze-thaw cycles.
Stability:	Stable for 3 months from receipt of products under proper storage and handling conditions.
RefSeq:	<u>NP_001061</u>
RefSeq Size:	1968
RefSeq ORF:	1353
Synonyms:	CDCBM4; GCP-1; TUBG; TUBGCP1



[View online »](#)

Locus ID: 7283

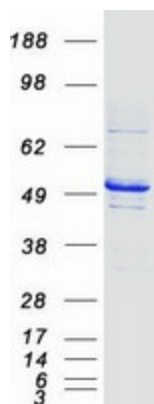
UniProt ID: [P23258](#)

Cytogenetics: 17q21.2

Summary: This gene encodes a member of the tubulin superfamily. The encoded protein localizes to the centrosome where it binds to microtubules as part of a complex referred to as the gamma-tubulin ring complex. The protein mediates microtubule nucleation and is required for microtubule formation and progression of the cell cycle. A pseudogene of this gene is found on chromosome 7. [provided by RefSeq, Jan 2009]

Protein Families: Druggable Genome

Product images:



Coomassie blue staining of purified TUBG1 protein (Cat# [TP300408]). The protein was produced from HEK293T cells transfected with TUBG1 cDNA clone (Cat# [RC200408]) using MegaTran 2.0 (Cat# [TT210002]).