

Product datasheet for PH300406

Uridine Phosphorylase 1 (UPP1) (NM_003364) Human Mass Spec Standard

Product data:

Product Type:	Mass Spec Standards
Description:	UPP1 MS Standard C13 and N15-labeled recombinant protein (NP_003355)
Species:	Human
Expression Host:	HEK293
Expression cDNA Clone or AA Sequence:	RC200406
Predicted MW:	33.9 kDa
Protein Sequence:	>RC200406 protein sequence Red=Cloning site Green=Tags(s) MAATGANAEKAESHNDPCVRLLNPNIAKMKEDILYHFNLTTSRHNFPALFGDVKFVCGGSPSRMKAFIR CVGAELGLDCPGRDYPNICAGTDRYAMYKVGVLVSHGMGIPISIMLHELIKLLYYARCSNVTIIRIG TSGGIGLEPGTVVITEQAVDTCFKAEFEQIVLGKRVIRKTDLNKKL VQELLLCSAELSEFTTVVGNMTCT LDFYEGQGRLDGALCSYTEKDKQAYLEAAAYAAGVRNIEMESSVF AAMCSACGLQA AVVCVTLNRLLEGDQ ISSPRNVLSEYQQRQRLVSYFIKKLSKA TRTRPLEQKLI SEEDLAANDILDYKDDDDKV
Tag:	C-Myc/DDK
Purity:	> 80% as determined by SDS-PAGE and Coomassie blue staining
Concentration:	>0.05 µg/µL as determined by microplate BCA method
Labeling Method:	Labeled with [U- 13C6, 15N4]-L-Arginine and [U- 13C6, 15N2]-L-Lysine
Buffer:	25 mM Tris-HCl, 100 mM glycine, pH 7.3
Storage:	Store at -80°C. Avoid repeated freeze-thaw cycles.
Stability:	Stable for 3 months from receipt of products under proper storage and handling conditions.
RefSeq:	NP_003355
RefSeq Size:	1733
RefSeq ORF:	930
Synonyms:	UDRPASE; UP; UPASE; UPP
Locus ID:	7378



[View online »](#)

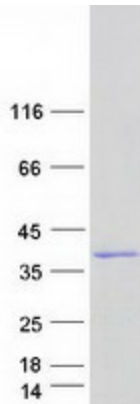
UniProt ID: [Q16831](#), [B4DND0](#)

Cytogenetics: 7p12.3

Summary: This gene encodes a uridine phosphorylase, an enzyme that catalyzes the reversible phosphorylation of uridine (or 2'- deoxyuridine) to uracil and ribose-1-phosphate (or deoxyribose-1-phosphate). The encoded enzyme functions in the degradation and salvage of pyrimidine ribonucleosides. [provided by RefSeq, Oct 2016]

Protein Pathways: Drug metabolism - other enzymes, Metabolic pathways, Pyrimidine metabolism

Product images:



Coomassie blue staining of purified UPP1 protein (Cat# [TP300406]). The protein was produced from HEK293T cells transfected with UPP1 cDNA clone (Cat# [RC200406]) using MegaTran 2.0 (Cat# [TT210002]).