

Product datasheet for PH300403

CORO2A (NM_003389) Human Mass Spec Standard

Product data:

Product Type:	Mass Spec Standards
Description:	CORO2A MS Standard C13 and N15-labeled recombinant protein (NP_003380)
Species:	Human
Expression Host:	HEK293
Expression cDNA Clone or AA Sequence:	RC200403
Predicted MW:	59.8 kDa
Protein Sequence:	>RC200403 protein sequence Red=Cloning site Green=Tags(s)

MSWHPQYRSSKFRHVFGKPAKENCYDSVPITRSVHDNHFCVNPFIHAVTECAGGGAFLVIPLHQTGK
LDPHYPKVCGHRGNVLDVKWNPFDDEIASCSEDATIKIWSIPKQLL TRNLTA YRKELVGHARRVGLVEW
HPTAANILFSAGYDYKVMIWNLDTKESVITSPMSTISCHQDVILSMSFNTNGSLLATTCKDRKIRVIDPR
AGTVLQEASYKGRASKVFLGNLKKLMSTGTSRWNNRQVALWDQDNL SVPLMEEDLDGSSGVLFPFYDA
DTSMLYVVGKGDGNIRYYEVSADKPHLSYL TEYRSYNPQKIGVMPKRGLDVSSCEIFRFYKLITTKSLI
EPISMIVPRRSESYQEDIYPPTAGAQPSLTAQEWL SGMNRDPI LVSLRPGSELLRPHPLPAERP I FNSMA
PASPRLLNQTEKLA AEDGWRSSSLL E EKMPRWAAEHRLEEKKTWLTNGFDVFECPPPKTENELLQMFYRQ
QEEIRRLRELLTQREVQAKQLELEIKNLRMGSEQL

TRTRPLEQKLI SEEDLAANDILDYKDDDDKV

Tag:	C-Myc/DDK
Purity:	> 80% as determined by SDS-PAGE and Coomassie blue staining
Concentration:	>0.05 µg/µL as determined by microplate BCA method
Labeling Method:	Labeled with [U- 13C6, 15N4]-L-Arginine and [U- 13C6, 15N2]-L-Lysine
Buffer:	25 mM Tris-HCl, 100 mM glycine, pH 7.3
Storage:	Store at -80°C. Avoid repeated freeze-thaw cycles.
Stability:	Stable for 3 months from receipt of products under proper storage and handling conditions.
RefSeq:	<u>NP_003380</u>
RefSeq Size:	5657
RefSeq ORF:	1575

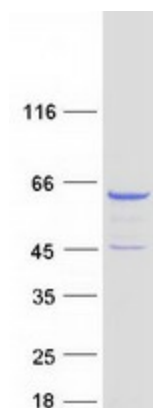


[View online »](#)

Synonyms: CLIPINB; IR10; WDR2
Locus ID: 7464
UniProt ID: [Q92828](#), [A0A024R150](#), [A8K9S3](#)
Cytogenetics: 9q22.33

Summary: This gene encodes a member of the WD repeat protein family. WD repeats are minimally conserved regions of approximately 40 amino acids typically bracketed by gly-his and trp-aspartic acid (GH-WD), which may facilitate formation of heterotrimeric or multiprotein complexes. Members of this family are involved in a variety of cellular processes, including cell cycle progression, signal transduction, apoptosis, and gene regulation. This protein contains 5 WD repeats, and has a structural similarity with actin-binding proteins: the *D. discoideum* coronin and the human p57 protein, suggesting that this protein may also be an actin-binding protein that regulates cell motility. Alternative splicing of this gene generates 2 transcript variants. [provided by RefSeq, Jul 2008]

Product images:



Coomassie blue staining of purified CORO2A protein (Cat# [TP300403]). The protein was produced from HEK293T cells transfected with CORO2A cDNA clone (Cat# [RC200403]) using MegaTran 2.0 (Cat# [TT210002]).