

## Product datasheet for PH300387

### IGBP1 (NM\_001551) Human Mass Spec Standard

#### Product data:

Product Type:	Mass Spec Standards
Description:	IGBP1 MS Standard C13 and N15-labeled recombinant protein (NP_001542)
Species:	Human
Expression Host:	HEK293
Expression cDNA Clone or AA Sequence:	RC200387
Predicted MW:	39.2 kDa
Protein Sequence:	>RC200387 protein sequence Red=Cloning site Green=Tags(s)

MAAEDELQLPRLPELFETGRQLLDEVEVATEPAGSRIVQEKVFKGLDLLEKAAEMLSQLDLFSRNEDLEE  
IASTDLYLLVPAFQGALTMKQVNPQRDLHLQRAREHFINYLTQCHCYHVAEFELPKTMNNSAENHTAN  
SSMAYPSLVAMASQRQAKIQRYKQKKELEHRLSAMKSAVESGQADDERVREYLLHLQRWIDISLEEIES  
IDQEIKILRERDSSREASTSNSSRQERPPVKPFILTRNMAQAKVFGAGYPSLPTMTVSDWYEQHRKYGAL  
PDQGIAKAAPEEFRKAAQQEEQEEKEEEDDEQTLHRAREWDDWKDTHPRGYGNRQNMG

TRTRPLEQKLISEEDLAANDILDYKDDDDKV

Tag:	C-Myc/DDK
Purity:	> 80% as determined by SDS-PAGE and Coomassie blue staining
Concentration:	>0.05 µg/µL as determined by microplate BCA method
Labeling Method:	Labeled with [U- <sup>13</sup> C <sub>6</sub> , <sup>15</sup> N <sub>4</sub> ]-L-Arginine and [U- <sup>13</sup> C <sub>6</sub> , <sup>15</sup> N <sub>2</sub> ]-L-Lysine
Buffer:	25 mM Tris-HCl, 100 mM glycine, pH 7.3
Storage:	Store at -80°C. Avoid repeated freeze-thaw cycles.
Stability:	Stable for 3 months from receipt of products under proper storage and handling conditions.
RefSeq:	<u><a href="#">NP_001542</a></u>
RefSeq Size:	1679
RefSeq ORF:	1017
Synonyms:	ALPHA-4; alpha4; IBP1
Locus ID:	3476



[View online »](#)

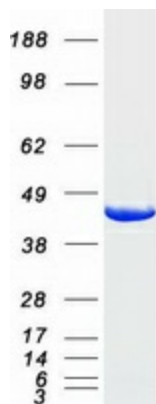
UniProt ID: [P78318](#)

Cytogenetics: Xq13.1

Summary: The proliferation and differentiation of B cells is dependent upon a B-cell antigen receptor (BCR) complex. Binding of antigens to specific B-cell receptors results in a tyrosine phosphorylation reaction through the BCR complex and leads to multiple signal transduction pathways. [provided by RefSeq, Jul 2008]

Protein Families: Druggable Genome

### Product images:



Coomassie blue staining of purified IGBP1 protein (Cat# [TP300387]). The protein was produced from HEK293T cells transfected with IGBP1 cDNA clone (Cat# [RC200387]) using MegaTran 2.0 (Cat# [TT210002]).