

Product datasheet for PH300373

Cathepsin H (CTSH) (NM_004390) Human Mass Spec Standard

Product data:

Product Type:	Mass Spec Standards
Description:	CTSH MS Standard C13 and N15-labeled recombinant protein (NP_004381)
Species:	Human
Expression Host:	HEK293
Expression cDNA Clone or AA Sequence:	RC200373
Predicted MW:	37.4 kDa
Protein Sequence:	>RC200373 protein sequence Red=Cloning site Green=Tags(s)

MWATLPLLCAGAWLLGVPVCGAAELSVNSLEKHFHFKSWMSKHKRTYSTEEYHRLQTFASNWRKINAHNN
GNHTFKMALNQFSDMSFAEIKHKYLWSEPQNC SATKSNYLRGTGPYPPSVDWRKKGNFVSPVKNQGACGS
CWTFSTTGALES AIAIATGKMLSLAEQQLVDCAQDFNNHGCQGGGLPSQAFEYILYNKGIMGEDTYPYQ GK
DGYCKFPQPKAIGFVKD VANIT IYDEEAMVEAVALYNPVSF AFEVTQDFMMYRTGIYSSTSCHKTPDKVN
HAVLAVGYGEKNGIPYWI VKNWGPQWGMNGYFLIERGKNMCGLAACASYPIPLV

TRTRPLEQKLI SEEDLAANDILDYKDDDDKV

Tag:	C-Myc/DDK
Purity:	> 80% as determined by SDS-PAGE and Coomassie blue staining
Concentration:	>0.05 µg/µL as determined by microplate BCA method
Labeling Method:	Labeled with [U- ¹³ C ₆ , ¹⁵ N ₄]-L-Arginine and [U- ¹³ C ₆ , ¹⁵ N ₂]-L-Lysine
Buffer:	25 mM Tris-HCl, 100 mM glycine, pH 7.3
Storage:	Store at -80°C. Avoid repeated freeze-thaw cycles.
Stability:	Stable for 3 months from receipt of products under proper storage and handling conditions.
RefSeq:	<u>NP_004381</u>
RefSeq Size:	1494
RefSeq ORF:	1005
Synonyms:	ACC-4; ACC-5; ACC4; ACC5; CPSB
Locus ID:	1512



[View online »](#)

UniProt ID: [P09668](#)

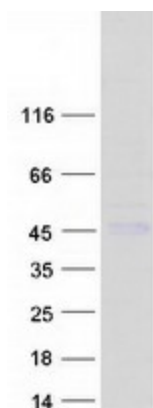
Cytogenetics: 15q25.1

Summary: The protein encoded by this gene is a lysosomal cysteine proteinase important in the overall degradation of lysosomal proteins. It is composed of a dimer of disulfide-linked heavy and light chains, both produced from a single protein precursor. The encoded protein, which belongs to the peptidase C1 protein family, can act both as an aminopeptidase and as an endopeptidase. Increased expression of this gene has been correlated with malignant progression of prostate tumors. Alternate splicing of this gene results in multiple transcript variants encoding different isoforms. [provided by RefSeq, Jan 2016]

Protein Families: Druggable Genome, Protease

Protein Pathways: Lysosome

Product images:



Coomassie blue staining of purified CTSH protein (Cat# [TP300373]). The protein was produced from HEK293T cells transfected with CTSH cDNA clone (Cat# [RC200373]) using MegaTran 2.0 (Cat# [TT210002]).