

Product datasheet for PH300367

ERH (NM_004450) Human Mass Spec Standard

Product data:

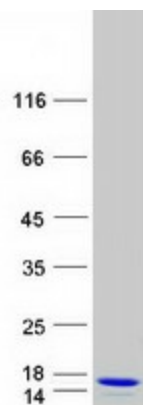
Product Type:	Mass Spec Standards
Description:	ERH MS Standard C13 and N15-labeled recombinant protein (NP_004441)
Species:	Human
Expression Host:	HEK293
Expression cDNA Clone or AA Sequence:	RC200367
Predicted MW:	12.3 kDa
Protein Sequence:	>RC200367 protein sequence Red=Cloning site Green=Tags(s) MSHTILLVQPTKRPEGRTYADYESVNECMEGVCKMYEEHLKRMNPNSPSITYDISQLDFIDDLADLSCL VYRADTQTYQPYNKDWIKEKIYVLLRRQAQAGK TRTRPLEQKLISEEDLAANDILDYKDDDDKV
Tag:	C-Myc/DDK
Purity:	> 80% as determined by SDS-PAGE and Coomassie blue staining
Concentration:	>0.05 µg/µL as determined by microplate BCA method
Labeling Method:	Labeled with [U- 13C6, 15N4]-L-Arginine and [U- 13C6, 15N2]-L-Lysine
Buffer:	25 mM Tris-HCl, 100 mM glycine, pH 7.3
Storage:	Store at -80°C. Avoid repeated freeze-thaw cycles.
Stability:	Stable for 3 months from receipt of products under proper storage and handling conditions.
RefSeq:	NP_004441
RefSeq Size:	801
RefSeq ORF:	312
Synonyms:	DROER
Locus ID:	2079
UniProt ID:	P84090 , A0A024R6D4
Cytogenetics:	14q24.1



[View online »](#)

Summary: May have a role in the cell cycle.[UniProtKB/Swiss-Prot Function]

Product images:



Coomassie blue staining of purified ERH protein (Cat# [TP300367]). The protein was produced from HEK293T cells transfected with ERH cDNA clone (Cat# [RC200367]) using MegaTran 2.0 (Cat# [TT210002]).