

Product datasheet for PH300352

RAB11A (NM_004663) Human Mass Spec Standard

Product data:

Product Type:	Mass Spec Standards
Description:	RAB11A MS Standard C13 and N15-labeled recombinant protein (NP_004654)
Species:	Human
Expression Host:	HEK293
Expression cDNA Clone or AA Sequence:	RC200352
Predicted MW:	24.4 kDa
Protein Sequence:	>RC200352 protein sequence Red =Cloning site Green =Tags(s) MGTRDDEYDYLKVVLLIGDSGVGKSNLLSRFTRNEFNLESKSTIGVEFATRISIQVDGKTIKAQIWDTAGQ ERYRAITSAYYRGAVGALLVYDIAKHLTYENVERWLKELRDHADSNIIVMLVGNKSDLRHLRAVPTDEAR AFAEKNGLSFIETSALDSTNVEAAFQITLTEIYRIVSQKQMSDRRENDMSPSNNVPIHVPPTTENPKV QCCQNI TR TRPLEQ KL ISEEDLAANDILDYKDDDDK V
Tag:	C-Myc/DDK
Purity:	> 80% as determined by SDS-PAGE and Coomassie blue staining
Concentration:	>0.05 µg/µL as determined by microplate BCA method
Labeling Method:	Labeled with [U- ¹³ C ₆ , ¹⁵ N ₄]-L-Arginine and [U- ¹³ C ₆ , ¹⁵ N ₂]-L-Lysine
Buffer:	25 mM Tris-HCl, 100 mM glycine, pH 7.3
Storage:	Store at -80°C. Avoid repeated freeze-thaw cycles.
Stability:	Stable for 3 months from receipt of products under proper storage and handling conditions.
RefSeq:	NP_004654
RefSeq Size:	4943
RefSeq ORF:	648
Synonyms:	YL8
Locus ID:	8766
UniProt ID:	P62491 , A0A024R5Z8



[View online »](#)

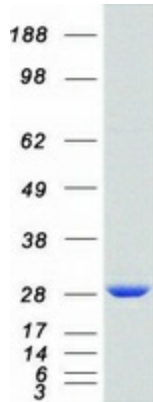
Cytogenetics: 15q22.31

Summary: The protein encoded by this gene belongs to the Rab family of the small GTPase superfamily. It is associated with both constitutive and regulated secretory pathways, and may be involved in protein transport. Two transcript variants encoding different isoforms have been found for this gene. [provided by RefSeq, May 2011]

Protein Families: Druggable Genome

Protein Pathways: Endocytosis

Product images:



Coomassie blue staining of purified RAB11A protein (Cat# [TP300352]). The protein was produced from HEK293T cells transfected with RAB11A cDNA clone (Cat# [RC200352]) using MegaTran 2.0 (Cat# [TT210002]).