

## Product datasheet for PH300348

### ROC1 (RBX1) (NM\_014248) Human Mass Spec Standard

#### Product data:

Product Type:	Mass Spec Standards
Description:	RBX1 MS Standard C13 and N15-labeled recombinant protein (NP_055063)
Species:	Human
Expression Host:	HEK293
Expression cDNA Clone or AA Sequence:	RC200348
Predicted MW:	12.3 kDa
Protein Sequence:	>RC200348 protein sequence Red=Cloning site Green=Tags(s)  MAAAMDVDTPSGTNSGAGKKRFEVKKWNALWAWDIVVDNCAICRNHIMDLCECQANQASATSEECTV AWGVCNHAHFHFCISRWLKTRQVCPLDNREWEFQKYGH  TRTRPLEQKLISEEDLAANDILDYKDDDDKV
Tag:	C-Myc/DDK
Purity:	> 80% as determined by SDS-PAGE and Coomassie blue staining
Concentration:	>0.05 µg/µL as determined by microplate BCA method
Labeling Method:	Labeled with [U- 13C6, 15N4]-L-Arginine and [U- 13C6, 15N2]-L-Lysine
Buffer:	25 mM Tris-HCl, 100 mM glycine, pH 7.3
Storage:	Store at -80°C. Avoid repeated freeze-thaw cycles.
Stability:	Stable for 3 months from receipt of products under proper storage and handling conditions.
RefSeq:	<a href="#">NP_055063</a>
RefSeq Size:	906
RefSeq ORF:	324
Synonyms:	BA554C12.1; RNF75; ROC1
Locus ID:	9978
UniProt ID:	<a href="#">P62877</a>
Cytogenetics:	22q13.2

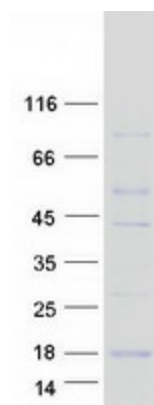

[View online »](#)

**Summary:** This locus encodes a RING finger-like domain-containing protein. The encoded protein interacts with cullin proteins and likely plays a role in ubiquitination processes necessary for cell cycle progression. This protein may also affect protein turnover. Related pseudogenes exist on chromosomes 2 and 5.[provided by RefSeq, Sep 2010]

**Protein Families:** Druggable Genome

**Protein Pathways:** Cell cycle, Nucleotide excision repair, Oocyte meiosis, Pathways in cancer, Renal cell carcinoma, TGF-beta signaling pathway, Ubiquitin mediated proteolysis, Wnt signaling pathway

### Product images:



Coomassie blue staining of purified RBX1 protein (Cat# [TP300348]). The protein was produced from HEK293T cells transfected with RBX1 cDNA clone (Cat# [RC200348]) using MegaTran 2.0 (Cat# [TT210002]).