

Product datasheet for PH300316

CERT1 (NM_031361) Human Mass Spec Standard

Product data:

Product Type:	Mass Spec Standards
Description:	COL4A3BP MS Standard C13 and N15-labeled recombinant protein (NP_112729)
Species:	Human
Expression Host:	HEK293
Expression cDNA Clone or AA Sequence:	RC200316
Predicted MW:	67.8 kDa
Protein Sequence:	>RC200316 representing NM_031361 Red=Cloning site Green=Tags(s)

MSDNQSWNSSGSEEDPETESGPPVERCGVLSKWTNYIHGWQDRWVVLKNNALSYKSEDETEYGCGRGSIC
LSKAVITPHDFDECRFDISVNDVWYLRAQDPDHRQQWIDAIEQHKTESGYGSESSLRRHGSMVSLVSGA
SGYSATSTSSFKKGHSLREKLAEMETFRDILCRQVDTLQKYFDACADAVSKDELQRDKVVEDEDDFPPT
RSDGDFLHSTNGNKEKLFPHVTPKGINGIDFKGEAITFKATTAGILATLSHCIELMVKREDSWQKRLDKE
TEKKRRTEEAYKNAMTELKKKSHFGGPDYEEGPNSLINEEEFFDAVEAALDRQDKIEEQSQSEKVRHLWP
TSLPSGDAFSSVGTHRFVQKVEEMVQNHMTYSLQDVGGDANWQLVVEEGEMKVYRREVEENGIVLDPLKA
THAVKGVGTGHEVCNYFWNVDRNDWETT IENFHVVETLADNAII IYQTHKRVWPASQRDVLVLSVIRKIP
ALTENDPETWIVCNFSVDHDSAPLNNRCVRAKINVAMICQTLVSPPEGNQEISRDNILCKITYVANVNP
GWAPASVLRRAVAKREYPKFLKRF TSYVQEKTAGKPILF

SGPTRRRLEQKLI SEEDLAANDILDYKDDDDKV

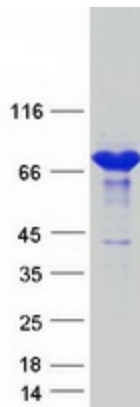
Tag:	C-Myc/DDK
Purity:	> 80% as determined by SDS-PAGE and Coomassie blue staining
Concentration:	>0.05 µg/µL as determined by microplate BCA method
Labeling Method:	Labeled with [U- ¹³ C ₆ , ¹⁵ N ₄]-L-Arginine and [U- ¹³ C ₆ , ¹⁵ N ₂]-L-Lysine
Buffer:	25 mM Tris-HCl, 100 mM glycine, pH 7.3
Storage:	Store at -80°C. Avoid repeated freeze-thaw cycles.
Stability:	Stable for 3 months from receipt of products under proper storage and handling conditions.
RefSeq:	NP_112729
RefSeq Size:	2311
RefSeq ORF:	1794



[View online »](#)

Synonyms:	CERT; CERTL; COL4A3BP; GPBP; MRD34; STARD11
Locus ID:	10087
UniProt ID:	Q9Y5P4 , A0A024RAJ5
Cytogenetics:	5q13.3
Summary:	This gene encodes a kinase that specifically phosphorylates the N-terminal region of the non-collagenous domain of the alpha 3 chain of type IV collagen, known as the Goodpasture antigen. Goodpasture disease is the result of an autoimmune response directed at this antigen. One isoform of this protein is also involved in ceramide intracellular transport. Three transcript variants encoding different isoforms have been found for this gene. [provided by RefSeq, Jul 2008]

Product images:



Coomassie blue staining of purified CERT1 protein (Cat# [TP300316]). The protein was produced from HEK293T cells transfected with CERT1 cDNA clone (Cat# [RC200316]) using MegaTran 2.0 (Cat# [TT210002]).