

Product datasheet for PH300310

STUB1 (NM_005861) Human Mass Spec Standard

Product data:

Product Type:	Mass Spec Standards
Description:	STUB1 MS Standard C13 and N15-labeled recombinant protein (NP_005852)
Species:	Human
Expression Host:	HEK293
Expression cDNA Clone or AA Sequence:	RC200310
Predicted MW:	34.9 kDa
Protein Sequence:	>Peptide sequence encoded by RC200310 Blue=ORF Red=Cloning site Green=Tag(s) MKGKKEEGGARLGAGGGSPEKSPSAQELKEQGNRLFVGRKYPEAAACYGRAITRNPLVAVYYTNRALC YMKMQQHEQALADCRRALELDGQSVKAHFFLGQCQLEMESYDEAIANLQRAYSLAKEQRLNFGDDIPSA LRIAKKKRWNSIEERRIHQESLHLSRLIAAERERELEECCQRNHEGDEDDSHVRAQQACIEAKHDKY MADMDLFSQVDEKRKKRDIPDYLCGKISFELMREPCITPSGITYDRKDIEEHLQRVGHFDPVTRSPLT QEQLIPNLAMKEVIDAFISENGWVEDY SGPTRTRPLEQKLISEEDLAANDILDYKDDDDKV Recombinant protein using RC200310 also available, TP300310
Tag:	C-Myc/DDK
Purity:	> 80% as determined by SDS-PAGE and Coomassie blue staining
Concentration:	>0.05 µg/µL as determined by microplate BCA method
Labeling Method:	Labeled with [U- ¹³ C ₆ , ¹⁵ N ₄]-L-Arginine and [U- ¹³ C ₆ , ¹⁵ N ₂]-L-Lysine
Buffer:	25 mM Tris-HCl, 100 mM glycine, pH 7.3
Storage:	Store at -80°C. Avoid repeated freeze-thaw cycles.
Stability:	Stable for 3 months from receipt of products under proper storage and handling conditions.
RefSeq:	NP_005852
RefSeq Size:	1650
RefSeq ORF:	909
Synonyms:	CHIP; HSPABP2; NY-CO-7; SCA48; SCAR16; SDCCAG7; UBOX1
Locus ID:	10273



[View online »](#)

UniProt ID: [Q9UNE7](#)

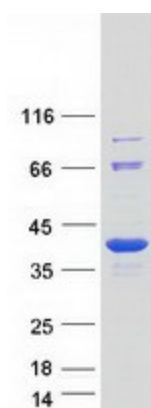
Cytogenetics: 16p13.3

Summary: This gene encodes a protein containing tetratricopeptide repeat and a U-box that functions as a ubiquitin ligase/cochaperone. The encoded protein binds to and ubiquitinates shock cognate 71 kDa protein (Hspa8) and DNA polymerase beta (Polb), among other targets. Mutations in this gene cause spinocerebellar ataxia, autosomal recessive 16. Alternative splicing results in multiple transcript variants. There is a pseudogene for this gene on chromosome 2. [provided by RefSeq, Jun 2014]

Protein Families: Druggable Genome

Protein Pathways: Ubiquitin mediated proteolysis

Product images:



Coomassie blue staining of purified STUB1 protein (Cat# [TP300310]). The protein was produced from HEK293T cells transfected with STUB1 cDNA clone (Cat# [RC200310]) using MegaTran 2.0 (Cat# [TT210002]).