

Product datasheet for PH300307

RHEB (NM_005614) Human Mass Spec Standard

Product data:

Product Type:	Mass Spec Standards
Description:	RHEB MS Standard C13 and N15-labeled recombinant protein (NP_005605)
Species:	Human
Expression Host:	HEK293
Expression cDNA Clone or AA Sequence:	RC200307
Predicted MW:	20.3 kDa
Protein Sequence:	>RC200307 representing NM_005614 Red=Cloning site Green=Tags(s) MPQSKSRKIAILGYRSVGKSSLTIQFVEGQFVDSYDPTIENTFTKLITVNGQEYHLQLVDTAGQDEYSIF PQTYSIDINGYILVYSVTSIKSFEVIKVIHGKLLDMVGKVQIPIMLVGNKKDLHMERVISYEEGKALAES WNAAFLESSAKENQTAVDVFRRIILEAEKMDGAASQGKSSCSVM TRTRPLEQKLISEEDLAANDILDYKDDDDKV
Tag:	C-Myc/DDK
Purity:	> 80% as determined by SDS-PAGE and Coomassie blue staining
Concentration:	>0.05 µg/µL as determined by microplate BCA method
Labeling Method:	Labeled with [U- ¹³ C ₆ , ¹⁵ N ₄]-L-Arginine and [U- ¹³ C ₆ , ¹⁵ N ₂]-L-Lysine
Buffer:	25 mM Tris-HCl, 100 mM glycine, pH 7.3
Storage:	Store at -80°C. Avoid repeated freeze-thaw cycles.
Stability:	Stable for 3 months from receipt of products under proper storage and handling conditions.
RefSeq:	NP_005605
RefSeq Size:	1396
RefSeq ORF:	552
Synonyms:	RHEB2
Locus ID:	6009
UniProt ID:	Q15382 , A0A090N900



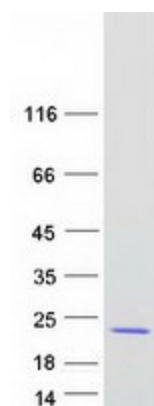
[View online »](#)

Cytogenetics: 7q36.1

Summary: This gene is a member of the small GTPase superfamily and encodes a lipid-anchored, cell membrane protein with five repeats of the RAS-related GTP-binding region. This protein is vital in regulation of growth and cell cycle progression due to its role in the insulin/TOR/S6K signaling pathway. The protein has GTPase activity and shuttles between a GDP-bound form and a GTP-bound form, and farnesylation of the protein is required for this activity. Three pseudogenes have been mapped, two on chromosome 10 and one on chromosome 22. [provided by RefSeq, Jul 2008]

Protein Pathways: Insulin signaling pathway, mTOR signaling pathway

Product images:



Coomassie blue staining of purified RHEB protein (Cat# [TP300307]). The protein was produced from HEK293T cells transfected with RHEB cDNA clone (Cat# [RC200307]) using MegaTran 2.0 (Cat# [TT210002]).