

## Product datasheet for PH300300

### GPIP137 (CAPRIN1) (NM\_005898) Human Mass Spec Standard

#### Product data:

Product Type:	Mass Spec Standards
Description:	CAPRIN1 MS Standard C13 and N15-labeled recombinant protein (NP_005889)
Species:	Human
Expression Host:	HEK293
Expression cDNA Clone or AA Sequence:	RC200300
Predicted MW:	78.4 kDa
Protein Sequence:	>RC200300 protein sequence Red=Cloning site Green=Tags(s)

MPSATSHSGSGSKSSGPPPPSGSSGSEAAAGAGAAAPASQHPATGTGAVQTEAMKQILGVIDKKLRNLEK  
KKGKLDYQERMNKGERLNQDQLDAVSKYQEVTNNLEFAKELQRSFMALSQDIQKTIKKTARREQLMREE  
AEQKRLKTVLELQYVLDKLGDDVVRTDLKQGLNGVPILSEEELSLLEDEFYKLVDPERDMSLRLENEYEHA  
SIHLWDLLEGKEKPVCGTTYKVLKEIVERVFQSNYFDSTHNNHQNGLCEEEEEASAPAVEDQVPEAEPEPA  
EEYTEQSEVESTEYVNRQFMAETQFTSGEKEQVDEWTVETVEVVNSLQQQPQAASPSVPEPHSLTPVAQA  
DPLVRRQRVQDLMAQMGPYNFIQDSMLDFENQTLDPALVSAQPMNPTQNMMDMPQLVCPVHSESRLAQP  
NQVPVQPEATQVPLVSSTSEGYTASQPLYQPSHATEQRPQKEPIDQIQATISLNTDQTTASSSLPAASQP  
QVFQAGTSKPLHSSGINVNAAPFQSMQTVFNMNAPVPPVNEPETLKQQNQYQASYNQSFSSQPHQVEQTE  
LQQEQLQTVVGTYHGSPDQSHQVTGNHQPPQNTGFPRSNQPYNSRGVSRGGSRGARGLMNGYRGPAN  
GFRGGYDGYRPSFSNTPNSGYTQSQFSAPRDYSGYQRDGYQQNFKRGSQSGPRGAPRGRGGPPRNRGM  
PQMNTQQVN

TRTRPLEQKLI SEEDLAANDILDYKDDDDKV

Tag:	C-Myc/DDK
Purity:	> 80% as determined by SDS-PAGE and Coomassie blue staining
Concentration:	>0.05 µg/µL as determined by microplate BCA method
Labeling Method:	Labeled with [U- 13C6, 15N4]-L-Arginine and [U- 13C6, 15N2]-L-Lysine
Buffer:	25 mM Tris-HCl, 100 mM glycine, pH 7.3
Storage:	Store at -80°C. Avoid repeated freeze-thaw cycles.
Stability:	Stable for 3 months from receipt of products under proper storage and handling conditions.
RefSeq:	<u><a href="#">NP_005889</a></u>

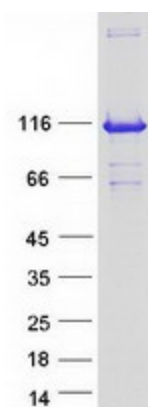


[View online »](#)

RefSeq Size:	5562
RefSeq ORF:	2127
Synonyms:	GPIAP1; GPIP137; GRIP137; M11S1; p137GPI; RNG105
Locus ID:	4076
UniProt ID:	<a href="#">Q14444</a>
Cytogenetics:	11p13

**Summary:** May regulate the transport and translation of mRNAs of proteins involved in synaptic plasticity in neurons and cell proliferation and migration in multiple cell types. Binds directly and selectively to MYC and CCND2 RNAs. In neuronal cells, directly binds to several mRNAs associated with RNA granules, including BDNF, CAMK2A, CREB1, MAP2, NTRK2 mRNAs, as well as to GRIN1 and KPNB1 mRNAs, but not to rRNAs.[UniProtKB/Swiss-Prot Function]

### Product images:



Coomassie blue staining of purified CAPRIN1 protein (Cat# [TP300300]). The protein was produced from HEK293T cells transfected with CAPRIN1 cDNA clone (Cat# [RC200300]) using MegaTran 2.0 (Cat# [TT210002]).