

Product datasheet for PH300289

ATG4B (NM_013325) Human Mass Spec Standard

Product data:

Product Type:	Mass Spec Standards
Description:	ATG4B MS Standard C13 and N15-labeled recombinant protein (NP_037457)
Species:	Human
Expression Host:	HEK293
Expression cDNA Clone or AA Sequence:	RC200289
Predicted MW:	44.3 kDa
Protein Sequence:	>RC200289 protein sequence Red=Cloning site Green=Tags(s)

MDAATLTYDTLRFAEFEDFPETSEPVWILGRKYSIFTEKDEILSDVASRLWFTYRKNFPAIGGTGPTSDT
GWGMLRCGQMIFAQALVCRHLGRDWRWTQRKRQPSYFVNLAFIDRKDSYYSIHQIAQMGVGEKKSIG
QWYGPNTVAQVLKKLAVFDTWSSLAVHIAMDNTVYMEEIRRLCRTSVPCAGATAFPADSDRHCNGFPAGA
EVTNRPSWRPLVLLIPLRLGLTDINEAYVETLKHCMMQSLGVIIGGKPNSAHYFIGYVGEELIYLDPH
TTQPAVEPTDGCIPDESFHCHPPCRMSIAELDPSIAGVFFCKTEDDFNDWCQQVKKLSLLGGALPMFE
LVEQQPSHLACPDVNLNLSLDSSDVERLERFFDSEDEDFEILSL

TRTRPLEQKLISEEDLAANDILDYKDDDDKV

Tag:	C-Myc/DDK
Purity:	> 80% as determined by SDS-PAGE and Coomassie blue staining
Concentration:	>0.05 µg/µL as determined by microplate BCA method
Labeling Method:	Labeled with [U- ¹³ C ₆ , ¹⁵ N ₄]-L-Arginine and [U- ¹³ C ₆ , ¹⁵ N ₂]-L-Lysine
Buffer:	25 mM Tris-HCl, 100 mM glycine, pH 7.3
Storage:	Store at -80°C. Avoid repeated freeze-thaw cycles.
Stability:	Stable for 3 months from receipt of products under proper storage and handling conditions.
RefSeq:	NP_037457
RefSeq Size:	2892
RefSeq ORF:	1179
Synonyms:	APG4B; AUTL1
Locus ID:	23192



[View online »](#)

UniProt ID: [Q9Y4P1](#), [B3KVU2](#)

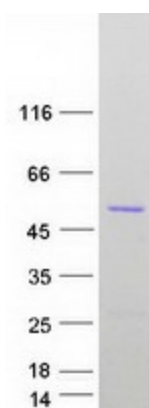
Cytogenetics: 2q37.3

Summary: Autophagy is the process by which endogenous proteins and damaged organelles are destroyed intracellularly. Autophagy is postulated to be essential for cell homeostasis and cell remodeling during differentiation, metamorphosis, non-apoptotic cell death, and aging. Reduced levels of autophagy have been described in some malignant tumors, and a role for autophagy in controlling the unregulated cell growth linked to cancer has been proposed. This gene encodes a member of the autophagin protein family. The encoded protein is also designated as a member of the C-54 family of cysteine proteases. Alternate transcriptional splice variants, encoding different isoforms, have been characterized. [provided by RefSeq, Jul 2008]

Protein Families: Protease

Protein Pathways: Regulation of autophagy

Product images:



Coomassie blue staining of purified ATG4B protein (Cat# [TP300289]). The protein was produced from HEK293T cells transfected with ATG4B cDNA clone (Cat# [RC200289]) using MegaTran 2.0 (Cat# [TT210002]).