

Product datasheet for PH300288

LSM1 (NM_014462) Human Mass Spec Standard

Product data:

Product Type:	Mass Spec Standards
Description:	LSM1 MS Standard C13 and N15-labeled recombinant protein (NP_055277)
Species:	Human
Expression Host:	HEK293
Expression cDNA Clone or AA Sequence:	RC200288
Predicted MW:	15.2 kDa
Protein Sequence:	>RC200288 protein sequence Red=Cloning site Green=Tags(s) MNYMPGTASLIEDIDKKHLVLLRDGRTLIGFLRSIDQFANLVLHQTVERIHVGKKYGDIPRGIFVVRGEN VLLGEIDLEKESDTPLQQVSIEEILEEQRVEQQTKLEAEKLVQALKDRGLSIPRADTLDEY TRTRPLEQKLISEEDLAANDILDYKDDDDKV
Tag:	C-Myc/DDK
Purity:	> 80% as determined by SDS-PAGE and Coomassie blue staining
Concentration:	>0.05 µg/µL as determined by microplate BCA method
Labeling Method:	Labeled with [U- 13C6, 15N4]-L-Arginine and [U- 13C6, 15N2]-L-Lysine
Buffer:	25 mM Tris-HCl, 100 mM glycine, pH 7.3
Storage:	Store at -80°C. Avoid repeated freeze-thaw cycles.
Stability:	Stable for 3 months from receipt of products under proper storage and handling conditions.
RefSeq:	NP_055277
RefSeq Size:	1161
RefSeq ORF:	399
Synonyms:	CASM; YJL124C
Locus ID:	27257
UniProt ID:	O15116 , A0A0S2Z590
Cytogenetics:	8p11.23



[View online »](#)

Summary:

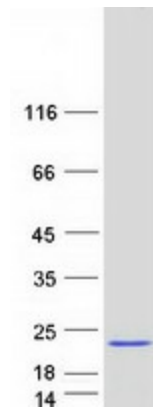
This gene encodes a member of the LSm family of RNA-binding proteins. LSm proteins form stable heteromers that bind specifically to the 3'-terminal oligo(U) tract of U6 snRNA and may play a role in pre-mRNA splicing by mediating U4/U6 snRNP formation. Increased expression of this gene may play a role in cellular transformation and the progression of several malignancies including lung cancer, mesothelioma and breast cancer. Alternatively spliced transcript variants have been observed for this gene, and a pseudogene of this gene is located on the short arm of chromosome 9. [provided by RefSeq, Nov 2011]

Protein Families:

Stem cell - Pluripotency

Protein Pathways:

RNA degradation

Product images:

Coomassie blue staining of purified LSM1 protein (Cat# [TP300288]). The protein was produced from HEK293T cells transfected with LSM1 cDNA clone (Cat# [RC200288]) using MegaTran 2.0 (Cat# [TT210002]).