

Product datasheet for PH300280

IPP 2 (PPP1R2) (NM_006241) Human Mass Spec Standard

Product data:

Product Type:	Mass Spec Standards
Description:	PPP1R2 MS Standard C13 and N15-labeled recombinant protein (NP_006232)
Species:	Human
Expression Host:	HEK293
Expression cDNA Clone or AA Sequence:	RC200280
Predicted MW:	23 kDa
Protein Sequence:	>RC200280 protein sequence Red=Cloning site Green=Tags(s) MAASTASHRPIKGILKNKTSTTSSMVASAEQPRGNVDEELSKKSQKWDEMNILATYHPADKDYGLMKIDE PSTPYHSMGDDDEDACSDTEATEAMAPDILARKLAAAEGLEPKYRIQEQEESGGEEDSDL SPEEREKKRQF EMKRKLHYNEGLNIKLARQLISKDLHDDDEEEMLETADGESMNT EESNQGSTPSDQQNKL RSS TRTRPLEQKLI SEEDLAANDILDYKDDDDKV
Tag:	C-Myc/DDK
Purity:	> 80% as determined by SDS-PAGE and Coomassie blue staining
Concentration:	>0.05 µg/µL as determined by microplate BCA method
Labeling Method:	Labeled with [U- 13C6, 15N4]-L-Arginine and [U- 13C6, 15N2]-L-Lysine
Buffer:	25 mM Tris-HCl, 100 mM glycine, pH 7.3
Storage:	Store at -80°C. Avoid repeated freeze-thaw cycles.
Stability:	Stable for 3 months from receipt of products under proper storage and handling conditions.
RefSeq:	NP_006232
RefSeq Size:	3468
RefSeq ORF:	615
Synonyms:	IPP-2; IPP2; PPP1R2A
Locus ID:	5504
UniProt ID:	P41236



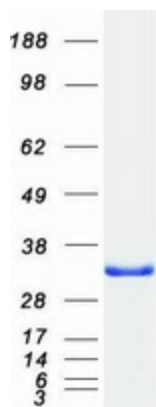
[View online »](#)

Cytogenetics: 3q29

Summary: Protein phosphatase-1 (PP1) is one of the main eukaryotic serine/threonine phosphatases. The protein encoded by this gene binds to the catalytic subunit of PP1, strongly inhibiting its activity. Ten related pseudogenes have been found throughout the human genome. Several splice variants encoding different isoforms have been found for this gene. [provided by RefSeq, Oct 2015]

Protein Families: Druggable Genome

Product images:



Coomassie blue staining of purified PPP1R2 protein (Cat# [TP300280]). The protein was produced from HEK293T cells transfected with PPP1R2 cDNA clone (Cat# [RC200280]) using MegaTran 2.0 (Cat# [TT210002]).