

## Product datasheet for PH300278

### S100A1 (NM\_006271) Human Mass Spec Standard

#### Product data:

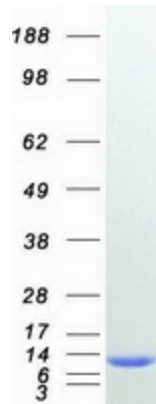
Product Type:	Mass Spec Standards
Description:	S100A1 MS Standard C13 and N15-labeled recombinant protein (NP_006262)
Species:	Human
Expression Host:	HEK293
Expression cDNA Clone or AA Sequence:	RC200278
Predicted MW:	10.5 kDa
Protein Sequence:	>RC200278 protein sequence Red=Cloning site Green=Tags(s)  MGSELETAMETLINVFHAHSGKEGDKYKLSKKELKELLQTELSGFLDAQKDVAVDKVMKELDENG DGEV DFQEYVVLVAALTVACNNFFWENS  TRTRPLEQKLI SEEDLAANDILDYKDDDDKV
Tag:	C-Myc/DDK
Purity:	> 80% as determined by SDS-PAGE and Coomassie blue staining
Concentration:	>0.05 µg/µL as determined by microplate BCA method
Labeling Method:	Labeled with [U- 13C6, 15N4]-L-Arginine and [U- 13C6, 15N2]-L-Lysine
Buffer:	25 mM Tris-HCl, 100 mM glycine, pH 7.3
Storage:	Store at -80°C. Avoid repeated freeze-thaw cycles.
Stability:	Stable for 3 months from receipt of products under proper storage and handling conditions.
RefSeq:	<a href="#">NP_006262</a>
RefSeq Size:	607
RefSeq ORF:	282
Synonyms:	S100; S100-alpha; S100A
Locus ID:	6271
UniProt ID:	<a href="#">P23297</a> , <a href="#">A0A0S2Z4H2</a>
Cytogenetics:	1q21.3



[View online »](#)

**Summary:**

The protein encoded by this gene is a member of the S100 family of proteins containing 2 EF-hand calcium-binding motifs. S100 proteins are localized in the cytoplasm and/or nucleus of a wide range of cells, and involved in the regulation of a number of cellular processes such as cell cycle progression and differentiation. S100 genes include at least 13 members which are located as a cluster on chromosome 1q21. This protein may function in stimulation of Ca<sup>2+</sup>-induced Ca<sup>2+</sup> release, inhibition of microtubule assembly, and inhibition of protein kinase C-mediated phosphorylation. Reduced expression of this protein has been implicated in cardiomyopathies. [provided by RefSeq, Jul 2008]

**Product images:**

Coomassie blue staining of purified S100A1 protein (Cat# [TP300278]). The protein was produced from HEK293T cells transfected with S100A1 cDNA clone (Cat# [RC200278]) using MegaTran 2.0 (Cat# [TT210002]).