

Product datasheet for PH300267

COPS8 (NM_198189) Human Mass Spec Standard

Product data:

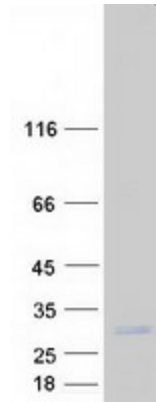
Product Type:	Mass Spec Standards
Description:	COPS8 MS Standard C13 and N15-labeled recombinant protein (NP_937832)
Species:	Human
Expression Host:	HEK293
Expression cDNA Clone or AA Sequence:	RC200267
Predicted MW:	23.2 kDa
Protein Sequence:	<p>>RC200267 protein sequence</p> <p>Red=Cloning site Green=Tags(s)</p> <p>MPVAVMAESAFSFKLLDQCENQLEAPGGIATPPVYGQLLALYLLHNDMNNARYLWKRIIPAIKSANSE LGGIWSVGQRIWQRDFPGIYTTINAHQWSETVQPIMEALRDATRRRAFALVSQAYTSIIADDFAAFVGLP VEEAVKGILEQGQWADSTTRMVLPRKPVAGALDVSFNKFIPLSEPAPVPPIPNEQQLARLTDYVAFLEN</p> <p>TRTRPLEQKLISEEDLAANDILDYKDDDDKV</p>
Tag:	C-Myc/DDK
Purity:	> 80% as determined by SDS-PAGE and Coomassie blue staining
Concentration:	>0.05 µg/µL as determined by microplate BCA method
Labeling Method:	Labeled with [U- ¹³ C ₆ , ¹⁵ N ₄]-L-Arginine and [U- ¹³ C ₆ , ¹⁵ N ₂]-L-Lysine
Buffer:	25 mM Tris-HCl, 100 mM glycine, pH 7.3
Storage:	Store at -80°C. Avoid repeated freeze-thaw cycles.
Stability:	Stable for 3 months from receipt of products under proper storage and handling conditions.
RefSeq:	<u>NP_937832</u>
RefSeq Size:	2339
RefSeq ORF:	630
Synonyms:	COP9; CSN8; SGN8
Locus ID:	10920
UniProt ID:	<u>Q99627</u>


[View online »](#)

Cytogenetics: 2q37.3

Summary: The protein encoded by this gene is one of the eight subunits of COP9 signalosome, a highly conserved protein complex that functions as an important regulator in multiple signaling pathways. The structure and function of COP9 signalosome is similar to that of the 19S regulatory particle of 26S proteasome. COP9 signalosome has been shown to interact with SCF-type E3 ubiquitin ligases and act as a positive regulator of E3 ubiquitin ligases. Alternatively spliced transcript variants encoding distinct isoforms have been observed. [provided by RefSeq, Jul 2008]

Product images:



Coomassie blue staining of purified COPS8 protein (Cat# [TP300267]). The protein was produced from HEK293T cells transfected with COPS8 cDNA clone (Cat# [RC200267]) using MegaTran 2.0 (Cat# [TT210002]).