

## Product datasheet for PH300262

### SCAMP2 (NM\_005697) Human Mass Spec Standard

#### Product data:

Product Type:	Mass Spec Standards
Description:	SCAMP2 MS Standard C13 and N15-labeled recombinant protein (NP_005688)
Species:	Human
Expression Host:	HEK293
Expression cDNA Clone or AA Sequence:	RC200262
Predicted MW:	36.6 kDa
Protein Sequence:	>RC200262 protein sequence Red=Cloning site Green=Tags(s)  MSAFDTNPFADPVDVNPFDPSVTQLTNAPQGGLAEFNPSETNAATTVPVTQLPGSSQPAVLQPSVEPT QPTPQAVVSAAQAGLLRQQEELDRKAAELERKERELQNTVANLHVRQNNWPPLPSWCPVKPCFYQDFSTE IPADYQRICKMLYYLWMLHSVTFLNLLACLAWFSGNSSKGVDFGLSILWFLIFTPCAFLCWYRPIYKAF RSDNSFSFFVFFVFFCQIGIYIQLVGIPGLGDSGWIAALSTLDNHSLAISVIMMVVAGFFTLCAVLSV FLLQRVHSLYRRTGASFQQAQEEFSQGIFFSRTFHRAASSAAQGAFOGN  TRTRPLEQKLISEEDLAANDILDYKDDDDKV
Tag:	C-Myc/DDK
Purity:	> 80% as determined by SDS-PAGE and Coomassie blue staining
Concentration:	>0.05 µg/µL as determined by microplate BCA method
Labeling Method:	Labeled with [U- <sup>13</sup> C <sub>6</sub> , <sup>15</sup> N <sub>4</sub> ]-L-Arginine and [U- <sup>13</sup> C <sub>6</sub> , <sup>15</sup> N <sub>2</sub> ]-L-Lysine
Buffer:	25 mM Tris-HCl, 100 mM glycine, pH 7.3
Storage:	Store at -80°C. Avoid repeated freeze-thaw cycles.
Stability:	Stable for 3 months from receipt of products under proper storage and handling conditions.
RefSeq:	<u><a href="#">NP_005688</a></u>
RefSeq Size:	1313
RefSeq ORF:	987
Locus ID:	10066
UniProt ID:	<u><a href="#">O15127</a></u> , <u><a href="#">A0A140VK92</a></u>



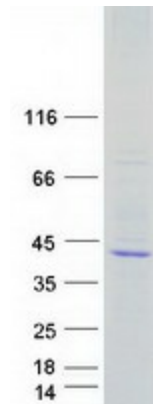
[View online »](#)

Cytogenetics: 15q24.1

**Summary:** This gene product belongs to the SCAMP family of proteins which are secretory carrier membrane proteins. They function as carriers to the cell surface in post-golgi recycling pathways. Different family members are highly related products of distinct genes, and are usually expressed together. These findings suggest that the SCAMPs may function at the same site during vesicular transport rather than in separate pathways. Alternate splicing results in multiple transcript variants. [provided by RefSeq, Mar 2016]

**Protein Families:** Transmembrane

### Product images:



Coomassie blue staining of purified SCAMP2 protein (Cat# [TP300262]). The protein was produced from HEK293T cells transfected with SCAMP2 cDNA clone (Cat# [RC200262]) using MegaTran 2.0 (Cat# [TT210002]).