

Product datasheet for PH300260

YKT6 (NM_006555) Human Mass Spec Standard

Product data:

Product Type:	Mass Spec Standards
Description:	YKT6 MS Standard C13 and N15-labeled recombinant protein (NP_006546)
Species:	Human
Expression Host:	HEK293
Expression cDNA Clone or AA Sequence:	RC200260
Predicted MW:	22.4 kDa
Protein Sequence:	>RC200260 protein sequence Red=Cloning site Green=Tags(s) MKLYSLSVLYKGEAKVLLKAAAYDVSSFSFFQRSSVQEFMTFTSQLIVERSSKGRASVKEQDYLCVYV RNDLAGVVIADNEYPSRVAFTLLEKVLDEF SKQVDRIDWPVGPATIHYPALDGHL SRYQNPREADPMT KVQAELEDTKIILHNTMESLLERGEKLLDVLVKSEVLGTQSKAFYKTARKQNSCCAIM TRTRPLEQKLI SEEDLAANDILDYKDDDDKV
Tag:	C-Myc/DDK
Purity:	> 80% as determined by SDS-PAGE and Coomassie blue staining
Concentration:	>0.05 µg/µL as determined by microplate BCA method
Labeling Method:	Labeled with [U- 13C6, 15N4]-L-Arginine and [U- 13C6, 15N2]-L-Lysine
Buffer:	25 mM Tris-HCl, 100 mM glycine, pH 7.3
Storage:	Store at -80°C. Avoid repeated freeze-thaw cycles.
Stability:	Stable for 3 months from receipt of products under proper storage and handling conditions.
RefSeq:	NP_006546
RefSeq Size:	2783
RefSeq ORF:	594
Locus ID:	10652
UniProt ID:	O15498 , A4D2J0
Cytogenetics:	7p13



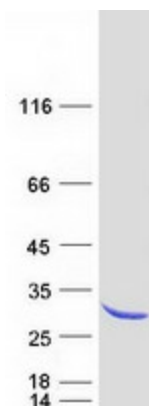
[View online »](#)

Summary:

This gene product is one of the SNARE recognition molecules implicated in vesicular transport between secretory compartments. It is a membrane associated, isoprenylated protein that functions at the endoplasmic reticulum-Golgi transport step. This protein is highly conserved from yeast to human and can functionally complement the loss of the yeast homolog in the yeast secretory pathway. [provided by RefSeq, Jul 2008]

Protein Pathways:

SNARE interactions in vesicular transport

Product images:

Coomassie blue staining of purified YKT6 protein (Cat# [TP300260]). The protein was produced from HEK293T cells transfected with YKT6 cDNA clone (Cat# [RC200260]) using MegaTran 2.0 (Cat# [TT210002]).