

## Product datasheet for PH300259

### EB2 (MAPRE2) (NM\_014268) Human Mass Spec Standard

#### Product data:

Product Type:	Mass Spec Standards
Description:	MAPRE2 MS Standard C13 and N15-labeled recombinant protein (NP_055083)
Species:	Human
Expression Host:	HEK293
Expression cDNA Clone or AA Sequence:	RC200259
Predicted MW:	37 kDa
Protein Sequence:	>RC200259 protein sequence Red=Cloning site Green=Tags(s)  MPGPTQTLSPNGENNDIIQDNNGTIIPFRKHTVRGERSYSWGMVNVYSTSITQETMSRHDIIAWVNDI VSLNYTKVEQLCSGAAYCQFMDMLFPGCISLKKVKFQAKLEHEYIHNFKLLQASFKRMNVDKVIPVEKLV KGRFQDNLDFIQWFKFYDANYDGKEYDPVEARQGQDAIPPPDPGEQIFNLPKKSHHANSPTAGAAKSSP AAKPGSTPSRPSSAKRASSSGSASKSDKDLETQVIQLNEQVHSLKLALEGVEKERDFYFGKLRREIELLCQ EHGQENDDLVQRLMDILYASEEHGHTEEPEAEEQAHEQQPPQQEEY  TRTRPLEQKLISEEDLAANDILDYKDDDDKV
Tag:	C-Myc/DDK
Purity:	> 80% as determined by SDS-PAGE and Coomassie blue staining
Concentration:	>0.05 µg/µL as determined by microplate BCA method
Labeling Method:	Labeled with [U- <sup>13</sup> C <sub>6</sub> , <sup>15</sup> N <sub>4</sub> ]-L-Arginine and [U- <sup>13</sup> C <sub>6</sub> , <sup>15</sup> N <sub>2</sub> ]-L-Lysine
Buffer:	25 mM Tris-HCl, 100 mM glycine, pH 7.3
Storage:	Store at -80°C. Avoid repeated freeze-thaw cycles.
Stability:	Stable for 3 months from receipt of products under proper storage and handling conditions.
RefSeq:	<a href="#">NP_055083</a>
RefSeq Size:	4279
RefSeq ORF:	981
Synonyms:	CSCSC2; EB1; EB2; RP1
Locus ID:	10982



[View online »](#)

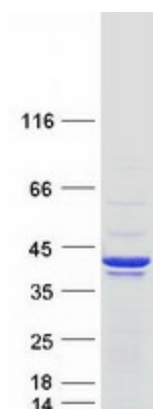
UniProt ID: [Q15555](#), [A0A024RC33](#)

Cytogenetics: 18q12.1-q12.2

**Summary:** The protein encoded by this gene shares significant homology to the adenomatous polyposis coli (APC) protein-binding EB1 gene family. This protein is a microtubule-associated protein that is necessary for spindle symmetry during mitosis. It is thought to play a role in the tumorigenesis of colorectal cancers and the proliferative control of normal cells. Alternative splicing of this gene results in multiple transcript variants. [provided by RefSeq, Jan 2012]

Protein Families: Druggable Genome

### Product images:



Coomassie blue staining of purified MAPRE2 protein (Cat# [TP300259]). The protein was produced from HEK293T cells transfected with MAPRE2 cDNA clone (Cat# [RC200259]) using MegaTran 2.0 (Cat# [TT210002]).