

## Product datasheet for PH300258

### B4GALT7 (NM\_007255) Human Mass Spec Standard

#### Product data:

Product Type:	Mass Spec Standards
Description:	B4GALT7 MS Standard C13 and N15-labeled recombinant protein (NP_009186)
Species:	Human
Expression Host:	HEK293
Expression cDNA Clone or AA Sequence:	RC200258
Predicted MW:	37.4 kDa
Protein Sequence:	>RC200258 protein sequence Red=Cloning site Green=Tags(s)  MFPSRRKAAQLPWEDGRSGLLSGGLPRKCSVFHLFVACL <del>SLGFFSLLWLQLSCSGDVARAVRGQGQETSG</del> PPRACPPPEPPPEHWEEDASWGP <del>HLAVLV</del> PFRRERFEELLVFP <del>HMRRFLSRKKIRHHIYVLN</del> QVDHFRFN RAALINVG <del>FLESSNSTDYIAMHDVDLLPLNEELDYGFPEAGPFHVASPELHPLYHYKTYVGGILL</del> LLSKQH YRLCNGMSNRFWGWGREDEFYRR <del>IKGAGLQLFRPSGIT</del> TGYK <del>TRHLHDPAWRKR</del> DQKRIAAQKQE <del>QFK</del> VDREGGLNTVKYHVASRTALSVGGAPCTVLNIMLDCDKTATPWCTFS  TRTRPLEQKLI <del>SEEDLAANDILDYKDDDDKV</del>
Tag:	C-Myc/DDK
Purity:	> 80% as determined by SDS-PAGE and Coomassie blue staining
Concentration:	>0.05 µg/µL as determined by microplate BCA method
Labeling Method:	Labeled with [U- <sup>13</sup> C <sub>6</sub> , <sup>15</sup> N <sub>4</sub> ]-L-Arginine and [U- <sup>13</sup> C <sub>6</sub> , <sup>15</sup> N <sub>2</sub> ]-L-Lysine
Buffer:	25 mM Tris-HCl, 100 mM glycine, pH 7.3
Storage:	Store at -80°C. Avoid repeated freeze-thaw cycles.
Stability:	Stable for 3 months from receipt of products under proper storage and handling conditions.
RefSeq:	<a href="#">NP_009186</a>
RefSeq Size:	1747
RefSeq ORF:	981
Synonyms:	EDSP1; EDSSLA; EDSSPD1; XGALT1; XGPT; XGPT1
Locus ID:	11285



[View online »](#)

UniProt ID: [Q9UBV7](#)

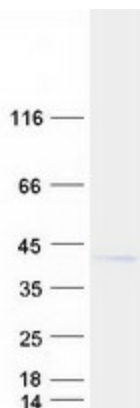
Cytogenetics: 5q35.3

**Summary:** This gene is a member of the beta-1,4-galactosyltransferase (beta4GalT) family. Family members encode type II membrane-bound glycoproteins that appear to have exclusive specificity for the donor substrate UDP-galactose. Each beta4GalT member has a distinct function in the biosynthesis of different glycoconjugates and saccharide structures. As type II membrane proteins, they have an N-terminal hydrophobic signal sequence that directs the protein to the Golgi apparatus which then remains uncleaved to function as a transmembrane anchor. The enzyme encoded by this gene attaches the first galactose in the common carbohydrate-protein linkage (GlcA-beta1,3-Gal-beta1,3-Gal-beta1,4-Xyl-beta1-O-Ser) found in proteoglycans. This enzyme differs from other beta4GalTs because it lacks the conserved Cys residues found in beta4GalT1-beta4GalT6 and it is located in cis-Golgi instead of trans-Golgi. Mutations in this gene have been associated with the progeroid form of Ehlers-Danlos syndrome. [provided by RefSeq, Oct 2009]

**Protein Families:** Transmembrane

**Protein Pathways:** Chondroitin sulfate biosynthesis, Heparan sulfate biosynthesis, Metabolic pathways

### Product images:



Coomassie blue staining of purified B4GALT7 protein (Cat# [TP300258]). The protein was produced from HEK293T cells transfected with B4GALT7 cDNA clone (Cat# [RC200258]) using MegaTran 2.0 (Cat# [TT210002]).