

Product datasheet for PH300254

MCAK (KIF2C) (NM_006845) Human Mass Spec Standard

Product data:

Product Type:	Mass Spec Standards
Description:	KIF2C MS Standard C13 and N15-labeled recombinant protein (NP_006836)
Species:	Human
Expression Host:	HEK293
Expression cDNA Clone or AA Sequence:	RC200254
Predicted MW:	81.3 kDa
Protein Sequence:	>RC200254 protein sequence Red=Cloning site Green=Tags(s)

MAMDSSLQARLFPGLAIKIQRSNGLIHSANVRTVNLEKSCVSVWEAEGGATKGKEIDFDDVAAINPELLQ
LLPLHPKDNLPLQENVTIQKQKRRSVNSKIPAPKESLSRSTRMSTVSELRITAQENDMEVELPAAANSR
KQFSVPPAPTRPSCPAVAEIPLRMVSEEMEEQVHSIRGSSANPVNSVRRKSCLVKEVEKMKNKREEKKA
QNSEMRMKRAQEYDSSFNWEFARMIKEFRATLECHPLTMTDPIEEHRICVVRKRPLNKQELAKKEIDV
ISIPSKCLLLVHEPKLKVDLTKYLENQAFCFDFAFDETASNEVVYRFTARPLVQTFEGGKATCFAYGQT
GSGKTHTMGGDLSGKAQNASKGIYAMASRDVFLLNQPCYRKLGLEVVYVTFEIIYNGKLFDLLNKKAKLR
VLEDGKQVQVVGLQEHLVNSADDVIKIDMGSACTSGQTFANSNRSRSHACFQIILRAKGRMHGKFSL
VDLAGNERGADTSSADRQTRMEGAEINKSLLALKECIRALGQNKHAHTPFRESKLTQVLRDSFIGENSRTC
MIATISPGISSCEYTLNLTLYADRVKELSPHSGPSGEQLIQMETEEMEACSNALIPGNLSKEEEEELSSQ
MSSFNEAMTQIRELEEKAMEELKEIIQQGPDWLELSEMTEQPDYDLETFVKAESALAQQAKHFSALPDV
IKALRLAMQLEEQASRQISSKKRPQ

Tag:	C-Myc/DDK
Purity:	> 80% as determined by SDS-PAGE and Coomassie blue staining
Concentration:	>0.05 µg/µL as determined by microplate BCA method
Labeling Method:	Labeled with [U- 13C6, 15N4]-L-Arginine and [U- 13C6, 15N2]-L-Lysine
Buffer:	25 mM Tris-HCl, 100 mM glycine, pH 7.3
Storage:	Store at -80°C. Avoid repeated freeze-thaw cycles.
Stability:	Stable for 3 months from receipt of products under proper storage and handling conditions.
RefSeq:	NP_006836
RefSeq Size:	2896



[View online »](#)

RefSeq ORF: 2175

Synonyms: CT139; KNSL6; MCAK

Locus ID: 11004

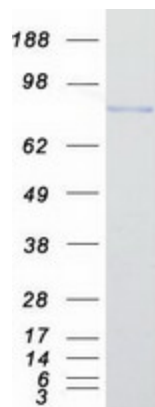
UniProt ID: [Q99661](#), [A0A140VKF1](#)

Cytogenetics: 1p34.1

Summary: This gene encodes a kinesin-like protein that functions as a microtubule-dependent molecular motor. The encoded protein can depolymerize microtubules at the plus end, thereby promoting mitotic chromosome segregation. Alternative splicing results in multiple transcript variants. [provided by RefSeq, Jul 2014]

Protein Families: Druggable Genome

Product images:



Coomassie blue staining of purified KIF2C protein (Cat# [TP300254]). The protein was produced from HEK293T cells transfected with KIF2C cDNA clone (Cat# [RC200254]) using MegaTran 2.0 (Cat# [TT210002]).