

## Product datasheet for PH300245

### 14-3-3 epsilon (YWHAE) (NM\_006761) Human Mass Spec Standard

#### Product data:

Product Type:	Mass Spec Standards
Description:	YWHAE MS Standard C13 and N15-labeled recombinant protein (NP_006752)
Species:	Human
Expression Host:	HEK293
Expression cDNA Clone or AA Sequence:	RC200245
Predicted MW:	29.2 kDa
Protein Sequence:	>RC200245 protein sequence Red=Cloning site Green=Tags(s)  MDDREDLVYQAKLAEQAERYDEMVESMKKVAGMDVELTVEERNLLSVAYKNVIGARRASWRIISSIEQKE ENKGGEDKLMIREYRQMVETELKLICCDILDVLDKHLIPAANTGESKVFYKMGDYHRYLAEFATGND RKEAAENSLVAYKAASDIAMTELPPTHPIRLGLALNFSVFYIEILNSPDRACRLAKAAFDDAIAELDTLS EESYKDSLIMQLLRDNLTLWTSMDMQGDGEEQNKEALQDVEDENQ  TRTRPLEQKLI SEEDLAANDILDYKDDDDKV
Tag:	C-Myc/DDK
Purity:	> 80% as determined by SDS-PAGE and Coomassie blue staining
Concentration:	>0.05 µg/µL as determined by microplate BCA method
Labeling Method:	Labeled with [U- <sup>13</sup> C <sub>6</sub> , <sup>15</sup> N <sub>4</sub> ]-L-Arginine and [U- <sup>13</sup> C <sub>6</sub> , <sup>15</sup> N <sub>2</sub> ]-L-Lysine
Buffer:	25 mM Tris-HCl, 100 mM glycine, pH 7.3
Storage:	Store at -80°C. Avoid repeated freeze-thaw cycles.
Stability:	Stable for 3 months from receipt of products under proper storage and handling conditions.
RefSeq:	<a href="#">NP_006752</a>
RefSeq Size:	1827
RefSeq ORF:	765
Synonyms:	14-3-3E; HEL2; KCIP-1; MDCR; MDS
Locus ID:	7531
UniProt ID:	<a href="#">P62258</a> , <a href="#">V9HW98</a>



[View online »](#)

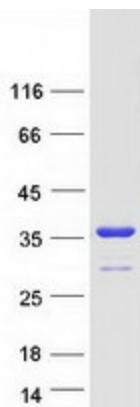
**Cytogenetics:** 17p13.3

**Summary:** This gene product belongs to the 14-3-3 family of proteins which mediate signal transduction by binding to phosphoserine-containing proteins. This highly conserved protein family is found in both plants and mammals, and this protein is 100% identical to the mouse ortholog. It interacts with CDC25 phosphatases, RAF1 and IRS1 proteins, suggesting its role in diverse biochemical activities related to signal transduction, such as cell division and regulation of insulin sensitivity. It has also been implicated in the pathogenesis of small cell lung cancer. Two transcript variants, one protein-coding and the other non-protein-coding, have been found for this gene. [provided by RefSeq, Aug 2008]

**Protein Families:** Druggable Genome

**Protein Pathways:** Cell cycle, Neurotrophin signaling pathway, Oocyte meiosis

### Product images:



Coomassie blue staining of purified YWHAE protein (Cat# [TP300245]). The protein was produced from HEK293T cells transfected with YWHAE cDNA clone (Cat# [RC200245]) using MegaTran 2.0 (Cat# [TT210002]).