

## Product datasheet for PH300244

### CLEC4E (NM\_014358) Human Mass Spec Standard

#### Product data:

Product Type:	Mass Spec Standards
Description:	CLEC4E MS Standard C13 and N15-labeled recombinant protein (NP_055173)
Species:	Human
Expression Host:	HEK293
Expression cDNA Clone or AA Sequence:	RC200244
Predicted MW:	25.1 kDa
Protein Sequence:	>RC200244 protein sequence Red=Cloning site Green=Tags(s)  MNSSKSSETQCTERGCFSQMFLLWTVAGIPIILFLSACFITRCVVFTRIFQTCDEKFKQLPENFTELSYNY YGSQSVKNCCPLNWEYFQSSCYFFSTDTISWALSLKNCSAMGAHLVVINSQEEQEFLSYKPKMREFFIG LSDQVVEGQWQWVDGTPPLTKSLSFWDVGEPNNIATLEDCATMRDSSNPRQWWDVTCFLNYFRICEMVGI NPLNKGKSL  TRTRPLEQKLI SEEDLAANDILDYKDDDDKV
Tag:	C-Myc/DDK
Purity:	> 80% as determined by SDS-PAGE and Coomassie blue staining
Concentration:	>0.05 µg/µL as determined by microplate BCA method
Labeling Method:	Labeled with [U- <sup>13</sup> C <sub>6</sub> , <sup>15</sup> N <sub>4</sub> ]-L-Arginine and [U- <sup>13</sup> C <sub>6</sub> , <sup>15</sup> N <sub>2</sub> ]-L-Lysine
Buffer:	25 mM Tris-HCl, 100 mM glycine, pH 7.3
Storage:	Store at -80°C. Avoid repeated freeze-thaw cycles.
Stability:	Stable for 3 months from receipt of products under proper storage and handling conditions.
RefSeq:	<a href="#">NP_055173</a>
RefSeq Size:	2158
RefSeq ORF:	657
Synonyms:	CLECSF9; MINCLE
Locus ID:	26253
UniProt ID:	<a href="#">Q9ULY5</a>



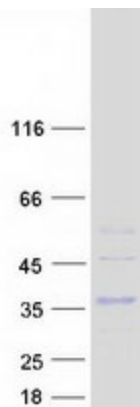
[View online »](#)

**Cytogenetics:** 12p13.31

**Summary:** This gene encodes a member of the C-type lectin/C-type lectin-like domain (CTL/CTLD) superfamily. Members of this family share a common protein fold and have diverse functions, such as cell adhesion, cell-cell signalling, glycoprotein turnover, and roles in inflammation and immune response. The encoded type II transmembrane protein is a downstream target of CCAAT/enhancer binding protein (C/EBP), beta (CEBPB) and may play a role in inflammation. Alternative splice variants have been described but their full-length sequence has not been determined. This gene is closely linked to other CTL/CTLD superfamily members on chromosome 12p13 in the natural killer gene complex region. [provided by RefSeq, Jul 2008]

**Protein Families:** Druggable Genome, Transmembrane

### Product images:



Coomassie blue staining of purified CLEC4E protein (Cat# [TP300244]). The protein was produced from HEK293T cells transfected with CLEC4E cDNA clone (Cat# [RC200244]) using MegaTran 2.0 (Cat# [TT210002]).