

## Product datasheet for PH300241

### Sumo 3 (SUMO3) (NM\_006936) Human Mass Spec Standard

#### Product data:

Product Type:	Mass Spec Standards
Description:	SUMO3 MS Standard C13 and N15-labeled recombinant protein (NP_008867)
Species:	Human
Expression Host:	HEK293
Expression cDNA Clone or AA Sequence:	RC200241
Predicted MW:	11.6 kDa
Protein Sequence:	>RC200241 protein sequence Red=Cloning site Green=Tags(s)  MSEEEKPKEGVKTENDHINLKVAGQDGSVVQFKIKRHTPLSKLMKAYCERQGLSMRQIRFRFDGQPINETD TPAQLEMEDEDTIDVFQQQTGGVPESLAGHSF  TRTRPLEQKLISEEDLAANDILDYKDDDDKV
Tag:	C-Myc/DDK
Purity:	> 80% as determined by SDS-PAGE and Coomassie blue staining
Concentration:	>0.05 µg/µL as determined by microplate BCA method
Labeling Method:	Labeled with [U- 13C6, 15N4]-L-Arginine and [U- 13C6, 15N2]-L-Lysine
Buffer:	25 mM Tris-HCl, 100 mM glycine, pH 7.3
Storage:	Store at -80°C. Avoid repeated freeze-thaw cycles.
Stability:	Stable for 3 months from receipt of products under proper storage and handling conditions.
RefSeq:	<u><a href="#">NP_008867</a></u>
RefSeq Size:	1831
RefSeq ORF:	309
Synonyms:	SMT3A; Smt3B; SMT3H1; SUMO-3
Locus ID:	6612
UniProt ID:	<u><a href="#">P55854</a></u>
Cytogenetics:	21q22.3



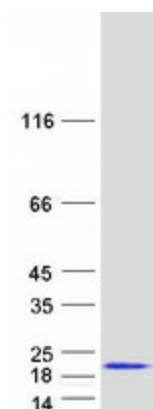
[View online »](#)

**Summary:**

This gene encodes a member of the small ubiquitin-related modifier (SUMO) family of eukaryotic proteins. The encoded protein is covalently conjugated to other proteins via a post-translation modification known as sumoylation. Sumoylation may play a role in a wide variety of cellular processes, including nuclear transport, DNA replication and repair, mitosis, transcriptional regulation, and signal transduction. Alternatively spliced transcript variants encoding distinct proteins have been described. [provided by RefSeq, Feb 2014]

**Protein Families:**

Druggable Genome

**Product images:**

Coomassie blue staining of purified SUMO3 protein (Cat# [TP300241]). The protein was produced from HEK293T cells transfected with SUMO3 cDNA clone (Cat# [RC200241]) using MegaTran 2.0 (Cat# [TT210002]).