

Product datasheet for PH300240

UBE2C (NM_181801) Human Mass Spec Standard

Product data:

| | |
|---------------------------------------|--|
| Product Type: | Mass Spec Standards |
| Description: | UBE2C MS Standard C13 and N15-labeled recombinant protein (NP_861517) |
| Species: | Human |
| Expression Host: | HEK293 |
| Expression cDNA Clone or AA Sequence: | RC200240 |
| Predicted MW: | 19.7 kDa |
| Protein Sequence: | >RC200240 protein sequence Red=Cloning site Green=Tags(s) MASQNRDPAATSVAARKGAEPSSGGAARGPVGKRLQQELMTLMMSGDKGISAFPESDNLFKWVGTIHGAA GTVYEDLRYKLSLEFPSGYPNAPTVMFLTPCYHPNVDQGNICLDILKEKWSALYDVRTILLSIQSLLG EPNIDSPLNTHAAELWKNPTAFKKYLQETYSKQVTSQEP TRTRPLEQKLISEEDLAANDILDYKDDDDKV |
| Tag: | C-Myc/DDK |
| Purity: | > 80% as determined by SDS-PAGE and Coomassie blue staining |
| Concentration: | >0.05 µg/µL as determined by microplate BCA method |
| Labeling Method: | Labeled with [U- ¹³ C ₆ , ¹⁵ N ₄]-L-Arginine and [U- ¹³ C ₆ , ¹⁵ N ₂]-L-Lysine |
| Buffer: | 25 mM Tris-HCl, 100 mM glycine, pH 7.3 |
| Storage: | Store at -80°C. Avoid repeated freeze-thaw cycles. |
| Stability: | Stable for 3 months from receipt of products under proper storage and handling conditions. |
| RefSeq: | NP_861517 |
| RefSeq Size: | 901 |
| RefSeq ORF: | 540 |
| Synonyms: | dj447F3.2; UBCH10 |
| Locus ID: | 11065 |
| UniProt ID: | O00762 |



[View online »](#)

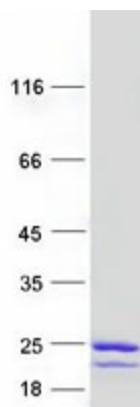
Cytogenetics: 20q13.12

Summary: The modification of proteins with ubiquitin is an important cellular mechanism for targeting abnormal or short-lived proteins for degradation. Ubiquitination involves at least three classes of enzymes: ubiquitin-activating enzymes, ubiquitin-conjugating enzymes, and ubiquitin-protein ligases. This gene encodes a member of the E2 ubiquitin-conjugating enzyme family. The encoded protein is required for the destruction of mitotic cyclins and for cell cycle progression, and may be involved in cancer progression. Multiple transcript variants encoding different isoforms have been found for this gene. Pseudogenes of this gene have been defined on chromosomes 4, 14, 15, 18, and 19. [provided by RefSeq, Aug 2013]

Protein Families: Druggable Genome

Protein Pathways: Ubiquitin mediated proteolysis

Product images:



Coomassie blue staining of purified UBE2C protein (Cat# [TP300240]). The protein was produced from HEK293T cells transfected with UBE2C cDNA clone (Cat# [RC200240]) using MegaTran 2.0 (Cat# [TT210002]).