

## Product datasheet for PH300234

### SLC25A20 (NM\_000387) Human Mass Spec Standard

#### Product data:

Product Type:	Mass Spec Standards
Description:	SLC25A20 MS Standard C13 and N15-labeled recombinant protein (NP_000378)
Species:	Human
Expression Host:	HEK293
Expression cDNA Clone or AA Sequence:	RC200234
Predicted MW:	32.9 kDa
Protein Sequence:	>RC200234 protein sequence Red=Cloning site Green=Tags(s)  MADQPKPISPLKNLLAGGFGGVCLVFVGHPLDTVKVRLQTQPPSLPGQPPMYSGTFDRCFRKTLFREGITG LYRGM AAPIIGVTPMFAVCFVGFGLGKKLQKHPEDVLSYPQLFAAGMLSGVFTTGIMTPGERIKLLQI QASSGESKYTGTLDCAKKLYQEFGIRGIYKGTVLTLMRDVPASGMFYMTYEWLKNIFTPEGKRVSELSAP RILVAGGIAGIFNWAVIPDVLKSRFQTAPPGKYPNGFRDVLRELIRDEGVTSLYKGFNAVMIRAFPAN AACFLGFVAMKFLNWATPNL  TRTRPLEQKLI SEEDLAANDILDYKDDDDKV
Tag:	C-Myc/DDK
Purity:	> 80% as determined by SDS-PAGE and Coomassie blue staining
Concentration:	>0.05 µg/µL as determined by microplate BCA method
Labeling Method:	Labeled with [U- 13C6, 15N4]-L-Arginine and [U- 13C6, 15N2]-L-Lysine
Buffer:	25 mM Tris-HCl, 100 mM glycine, pH 7.3
Storage:	Store at -80°C. Avoid repeated freeze-thaw cycles.
Stability:	Stable for 3 months from receipt of products under proper storage and handling conditions.
RefSeq:	<u>NP_000378</u>
RefSeq Size:	1909
RefSeq ORF:	903
Synonyms:	CAC; CACT
Locus ID:	788



[View online »](#)

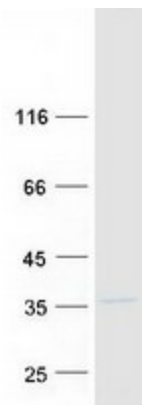
UniProt ID: [O43772](#)

Cytogenetics: 3p21.31

**Summary:** This gene product is one of several closely related mitochondrial-membrane carrier proteins that shuttle substrates between cytosol and the intramitochondrial matrix space. This protein mediates the transport of acylcarnitines into mitochondrial matrix for their oxidation by the mitochondrial fatty acid-oxidation pathway. Mutations in this gene are associated with carnitine-acylcarnitine translocase deficiency, which can cause a variety of pathological conditions such as hypoglycemia, cardiac arrest, hepatomegaly, hepatic dysfunction and muscle weakness, and is usually lethal in new born and infants. [provided by RefSeq, Jul 2008]

**Protein Families:** Druggable Genome, Transmembrane

### Product images:



Coomassie blue staining of purified SLC25A20 protein (Cat# [TP300234]). The protein was produced from HEK293T cells transfected with SLC25A20 cDNA clone (Cat# [RC200234]) using MegaTran 2.0 (Cat# [TT210002]).