

## Product datasheet for PH300219

### TMCO1 (NM\_019026) Human Mass Spec Standard

#### Product data:

Product Type:	Mass Spec Standards
Description:	TMCO1 MS Standard C13 and N15-labeled recombinant protein (NP_061899)
Species:	Human
Expression Host:	HEK293
Expression cDNA Clone or AA Sequence:	RC200219
Predicted MW:	21.2 kDa
Protein Sequence:	>RC200219 protein sequence Red=Cloning site Green=Tags(s)  MSTMFADTLLIVFISVCTALLAEGITWLVYRTDKYKRLKAEVEKQSKKLEKKKETITESAGRQKQKKIE RQEEKLNNDLSMVRMKSMAIGFCFTALMGMFNSIFDGRVVAKLPFTPLSYIQGLSHRNLLGDDTTD CSFIFLYILCTMSIRQNIQKILGLAPSRAATKQAGGFLGPPPPSGKFS  TRTRPLEQKLI SEEDLAANDILDYKDDDDKV
Tag:	C-Myc/DDK
Purity:	> 80% as determined by SDS-PAGE and Coomassie blue staining
Concentration:	>0.05 µg/µL as determined by microplate BCA method
Labeling Method:	Labeled with [U- 13C6, 15N4]-L-Arginine and [U- 13C6, 15N2]-L-Lysine
Buffer:	25 mM Tris-HCl, 100 mM glycine, pH 7.3
Storage:	Store at -80°C. Avoid repeated freeze-thaw cycles.
Stability:	Stable for 3 months from receipt of products under proper storage and handling conditions.
RefSeq:	<a href="#">NP_061899</a>
RefSeq Size:	4478
RefSeq ORF:	564
Synonyms:	HP10122; PCIA3; PNAS-136; TMCC4
Locus ID:	54499
UniProt ID:	<a href="#">Q9UM00</a>



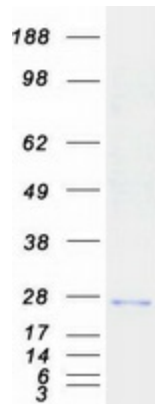
[View online »](#)

**Cytogenetics:** 1q24.1

**Summary:** This locus encodes a transmembrane protein. Mutations at this locus have been associated with craniofacial dysmorphism, skeletal anomalies, and cognitive disability. Mutations at this locus have also been associated with open angle glaucoma blindness. Alternatively spliced transcript variants have been described. [provided by RefSeq, Jan 2012]

**Protein Families:** Transmembrane

**Product images:**



Coomassie blue staining of purified TMCO1 protein (Cat# [TP300219]). The protein was produced from HEK293T cells transfected with TMCO1 cDNA clone (Cat# [RC200219]) using MegaTran 2.0 (Cat# [TT210002]).