

Product datasheet for PH300215

RABL4 (IFT27) (NM_006860) Human Mass Spec Standard

Product data:

Product Type:	Mass Spec Standards
Description:	RABL4 MS Standard C13 and N15-labeled recombinant protein (NP_006851)
Species:	Human
Expression Host:	HEK293
Expression cDNA Clone or AA Sequence:	RC200215
Predicted MW:	20.5 kDa
Protein Sequence:	>RC200215 protein sequence Red=Cloning site Green=Tags(s) MVKLAAKCILAGDPAVGKTALAQIFRSDGAHFQKSYTLTTGMDLVVKTVVPVDTGDSVELFIFDSAGKEL FSEMLDKLWESPNVLCVYDVTNEESFNCSKWLEKARSQAPGISLPGVLVGNKTDLAGRRAVDSAEARA WALGQGLECFETSVKEMENFEAPFHCLAKQFHQLYREKVEVFRALA TRTRPLEQKLISEEDLAANDILDYKDDDDKV
Tag:	C-Myc/DDK
Purity:	> 80% as determined by SDS-PAGE and Coomassie blue staining
Concentration:	>0.05 µg/µL as determined by microplate BCA method
Labeling Method:	Labeled with [U- ¹³ C ₆ , ¹⁵ N ₄]-L-Arginine and [U- ¹³ C ₆ , ¹⁵ N ₂]-L-Lysine
Buffer:	25 mM Tris-HCl, 100 mM glycine, pH 7.3
Storage:	Store at -80°C. Avoid repeated freeze-thaw cycles.
Stability:	Stable for 3 months from receipt of products under proper storage and handling conditions.
RefSeq:	NP_006851
RefSeq Size:	1101
RefSeq ORF:	558
Synonyms:	BBS19; FAP156; RABL4; RAYL
Locus ID:	11020
UniProt ID:	Q9BW83



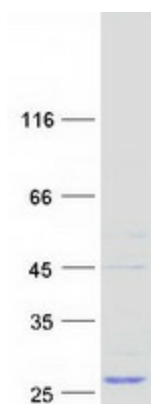
[View online »](#)

Cytogenetics: 22q12.3

Summary: This gene encodes a GTP-binding protein that is a core component of the intraflagellar transport complex B. Characterization of the similar Chlamydomonas protein indicates a function in cell cycle control. Alternative splicing of this gene results in multiple transcript variants. [provided by RefSeq, Jan 2012]

Protein Families: Druggable Genome

Product images:



Coomassie blue staining of purified IFT27 protein (Cat# [TP300215]). The protein was produced from HEK293T cells transfected with IFT27 cDNA clone (Cat# [RC200215]) using MegaTran 2.0 (Cat# [TT210002]).