

Product datasheet for PH300212

MTFR1L (NM_019557) Human Mass Spec Standard

Product data:

Product Type:	Mass Spec Standards
Description:	FAM54B MS Standard C13 and N15-labeled recombinant protein (NP_062457)
Species:	Human
Expression Host:	HEK293
Expression cDNA Clone or AA Sequence:	RC200212
Predicted MW:	32 kDa
Protein Sequence:	>RC200212 protein sequence Red=Cloning site Green=Tags(s) MSGMEATVTIPIWQNKPHGAARSVRRIGTNLPLKPCARASFETLPNISDLCLRDVPPVPTLADIAWIAA DEEETIYARVRS DTRPLRHTWKPSPLIVMQRNASV PNLRGSEERLLALKKPALPALSRTELQDELSHLRS QIAKIVAADAASASLTPDFLSPGSSNVSSPLPCFGSSFHSTTSFVSDITEETEVEPELPSVPLLCSAS PECKPEHKAACSSSEEDDCVSLSKASSFADMMGILKDFHRMKQSQDLNRSLLKEEDPAVLISEVLRKF ALKEEDISRKGN TRTRPLEQKLI SEEDLAANDILDYKDDDDKV
Tag:	C-Myc/DDK
Purity:	> 80% as determined by SDS-PAGE and Coomassie blue staining
Concentration:	>0.05 µg/µL as determined by microplate BCA method
Labeling Method:	Labeled with [U- ¹³ C ₆ , ¹⁵ N ₄]-L-Arginine and [U- ¹³ C ₆ , ¹⁵ N ₂]-L-Lysine
Buffer:	25 mM Tris-HCl, 100 mM glycine, pH 7.3
Storage:	Store at -80°C. Avoid repeated freeze-thaw cycles.
Stability:	Stable for 3 months from receipt of products under proper storage and handling conditions.
RefSeq:	<u>NP_062457</u>
RefSeq Size:	2120
RefSeq ORF:	876
Synonyms:	FAM54B; HYST1888; MST116; MSTP116
Locus ID:	56181

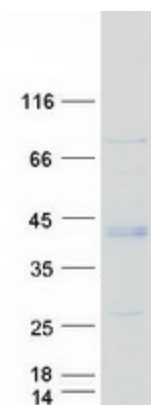


[View online »](#)

UniProt ID: [Q9H019](#), [A0A0S2Z5H6](#)

Cytogenetics: 1p36.11

Product images:



Coomassie blue staining of purified MTFR1L protein (Cat# [TP300212]). The protein was produced from HEK293T cells transfected with MTFR1L cDNA clone (Cat# [RC200212]) using MegaTran 2.0 (Cat# [TT210002]).