

## Product datasheet for PH300180

### KCTD5 (NM\_018992) Human Mass Spec Standard

#### Product data:

Product Type:	Mass Spec Standards
Description:	KCTD5 MS Standard C13 and N15-labeled recombinant protein (NP_061865)
Species:	Human
Expression Host:	HEK293
Expression cDNA Clone or AA Sequence:	RC200180
Predicted MW:	26.1 kDa
Protein Sequence:	>RC200180 protein sequence Red=Cloning site Green=Tags(s)  MAENHCELLSPARGGIGAGLGGGLCRRCSAGLGALAQRPGSVSKWVRLNVGGTYFLTTRQTLCRDPKSFL YRLCQADPDLSDKDETGAYLIDRDPTYFGPVLNLYLRHGKLVINKDLAEEGVLEEAEFYNITSLIKLVKD KIRERDSKTSQVPVKHVYRVLQCQEEELTQMVSTMSDGWKFQELVSISSYNYGNEDQAEFLCVVSKELH NTPYGTASEPSEKAKILQERGSRM  TRTRPLEQKLISEEDLAANDILDYKDDDDKV
Tag:	C-Myc/DDK
Purity:	> 80% as determined by SDS-PAGE and Coomassie blue staining
Concentration:	>0.05 µg/µL as determined by microplate BCA method
Labeling Method:	Labeled with [U- <sup>13</sup> C <sub>6</sub> , <sup>15</sup> N <sub>4</sub> ]-L-Arginine and [U- <sup>13</sup> C <sub>6</sub> , <sup>15</sup> N <sub>2</sub> ]-L-Lysine
Buffer:	25 mM Tris-HCl, 100 mM glycine, pH 7.3
Storage:	Store at -80°C. Avoid repeated freeze-thaw cycles.
Stability:	Stable for 3 months from receipt of products under proper storage and handling conditions.
RefSeq:	<a href="#">NP_061865</a>
RefSeq Size:	2479
RefSeq ORF:	702
Locus ID:	54442
UniProt ID:	<a href="#">Q9NXV2</a>
Cytogenetics:	16p13.3

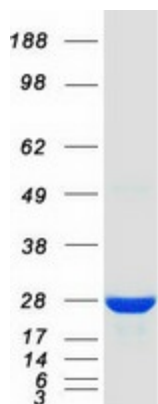


[View online »](#)

**Summary:** Its interaction with CUL3 suggests that it may act as a substrate adapter in some E3 ligase complex (PubMed:18573101). Does not affect the function of Kv channel Kv2.1/KCNB1, Kv1.2/KCNA2, Kv4.2/KCND2 and Kv3.4/KCNC4 (PubMed:19361449).[UniProtKB/Swiss-Prot Function]

**Protein Families:** Ion Channels: Other

**Product images:**



Coomassie blue staining of purified KCTD5 protein (Cat# [TP300180]). The protein was produced from HEK293T cells transfected with KCTD5 cDNA clone (Cat# [RC200180]) using MegaTran 2.0 (Cat# [TT210002]).