

Product datasheet for PH300175

DUS2L (DUS2) (NM_017803) Human Mass Spec Standard

Product data:

Product Type:	Mass Spec Standards
Description:	DUS2L MS Standard C13 and N15-labeled recombinant protein (NP_060273)
Species:	Human
Expression Host:	HEK293
Expression cDNA Clone or AA Sequence:	RC200175
Predicted MW:	55.1 kDa
Protein Sequence:	>RC200175 protein sequence Red=Cloning site Green=Tags(s)

MILNSLSLCYHNKLLILAPMVRVGTLPMLLLALDYGADIVYCEELIDLKMIQCKRVVNEVLSTVDFVAPDD
RVVVRTCEREQNRVVFQMGTSDAERALAVARLVENDVAGIDVNMGCQPKQYSTKGGMGAALLSDPKIEKI
LSTLVKGTTRRPVTCKIRILPSLEDTSLVKRIERTGIAAIAVHGRKREERPQHPVSCEVIKAIADTSLIP
VIANGGSHDHIQQYSDIEDFRQATAASSVMVARAAMWNPISIFLKEGLRPLEEVMQKYIRYAVQYDNHYTN
TKYCLCQMLREQLESPQGRLHAAQSSREICEAFGLGAFYEETTQELDAQARLSAKTSEQTGEPAEDTS
GVIKMAVKFDRRAYPAQITPKMCLLEWCRREKLAQPVYETVQRPLDRLFSSIVTVAEQKYQSTLWDKSKK
LAEQAAAIVCLRSQGLPEGRLGEEPSLHKRREAPDQDPGGPRAQELAQPGDLCKKPFVALGSGEESPL
EGW

TRTRPLEQKLISEEDLAANDILDYKDDDDKV

Tag:	C-Myc/DDK
Purity:	> 80% as determined by SDS-PAGE and Coomassie blue staining
Concentration:	>0.05 µg/µL as determined by microplate BCA method
Labeling Method:	Labeled with [U- ¹³ C ₆ , ¹⁵ N ₄]-L-Arginine and [U- ¹³ C ₆ , ¹⁵ N ₂]-L-Lysine
Buffer:	25 mM Tris-HCl, 100 mM glycine, pH 7.3
Storage:	Store at -80°C. Avoid repeated freeze-thaw cycles.
Stability:	Stable for 3 months from receipt of products under proper storage and handling conditions.
RefSeq:	NP_060273
RefSeq Size:	2342
RefSeq ORF:	1479



[View online »](#)

Synonyms: DUS2L; SMM1; URLC8

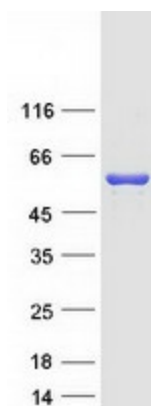
Locus ID: 54920

UniProt ID: [Q9NX74](#), [A0A024R6Z7](#)

Cytogenetics: 16q22.1

Summary: This gene encodes a cytoplasmic protein that catalyzes the conversion of uridine residues to dihydrouridine in the D-loop of tRNA. The resulting modified bases confer enhanced regional flexibility to tRNA. The encoded protein may increase the rate of translation by inhibiting an interferon-induced protein kinase. This gene has been implicated in pulmonary carcinogenesis. Alternatively spliced transcript variants have been described for this gene. [provided by RefSeq, Nov 2012]

Product images:



Coomassie blue staining of purified DUS2 protein (Cat# [TP300175]). The protein was produced from HEK293T cells transfected with DUS2 cDNA clone (Cat# [RC200175]) using MegaTran 2.0 (Cat# [TT210002]).