

Product datasheet for PH300174

CHCHD3 (NM_017812) Human Mass Spec Standard

Product data:

Product Type:	Mass Spec Standards
Description:	CHCHD3 MS Standard C13 and N15-labeled recombinant protein (NP_060282)
Species:	Human
Expression Host:	HEK293
Expression cDNA Clone or AA Sequence:	RC200174
Predicted MW:	26.2 kDa
Protein Sequence:	>RC200174 protein sequence Red=Cloning site Green=Tags(s) MGGTTSTRRVTFEADENENITVVKGIRLSENVIDRMKESSPSGSKSQRYSGAYGASVSDEELKRRVAEEL ALEQAKKESQKRLKQAKELDRERAAANEQLTRAILRERICSEEEERAKAKHLARQLEEKDRVLKKQDAF YKEQLARLEERSSEFYRVTTTEQYQKAAEEVEAKFKRYESHPCADLQAKILQCYRENTHTLTKCSALATQ YMHCVNHAKQSMLEKGG TRTRPLEQKLI SEEDLAANDILDYKDDDDKV
Tag:	C-Myc/DDK
Purity:	> 80% as determined by SDS-PAGE and Coomassie blue staining
Concentration:	>0.05 µg/µL as determined by microplate BCA method
Labeling Method:	Labeled with [U- ¹³ C ₆ , ¹⁵ N ₄]-L-Arginine and [U- ¹³ C ₆ , ¹⁵ N ₂]-L-Lysine
Buffer:	25 mM Tris-HCl, 100 mM glycine, pH 7.3
Storage:	Store at -80°C. Avoid repeated freeze-thaw cycles.
Stability:	Stable for 3 months from receipt of products under proper storage and handling conditions.
RefSeq:	NP_060282
RefSeq Size:	1622
RefSeq ORF:	681
Synonyms:	Mic19; MICOS19; MINOS3; PPP1R22
Locus ID:	54927
UniProt ID:	Q9NX63 , A4D1N4

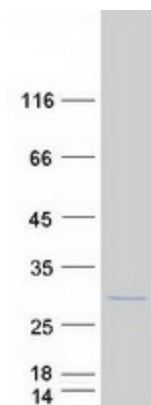


[View online »](#)

Cytogenetics: 7q32.3-q33

Summary: The protein encoded by this gene is an inner mitochondrial membrane scaffold protein. Absence of the encoded protein affects the structural integrity of mitochondrial cristae and leads to reductions in ATP production, cell growth, and oxygen consumption. This protein is part of the mitochondrial contact site and cristae organizing system (MICOS). Several transcript variants encoding different isoforms have been found for this gene. [provided by RefSeq, Nov 2015]

Product images:



Coomassie blue staining of purified CHCHD3 protein (Cat# [TP300174]). The protein was produced from HEK293T cells transfected with CHCHD3 cDNA clone (Cat# [RC200174]) using MegaTran 2.0 (Cat# [TT210002]).