

Product datasheet for PH300173

HAUS4 (NM_017815) Human Mass Spec Standard

Product data:

Product Type:	Mass Spec Standards
Description:	HAUS4 MS Standard C13 and N15-labeled recombinant protein (NP_060285)
Species:	Human
Expression Host:	HEK293
Expression cDNA Clone or AA Sequence:	RC200173
Predicted MW:	42.4 kDa
Protein Sequence:	>RC200173 protein sequence Red=Cloning site Green=Tags(s)

MASGDFCSPGEGMEILQQVCSKQLPPCNLSKEDLLQNPYFSKLLLNLSQHVDSEGLSLTLAKEQAQAWKE
VRLHKTTWLRSEILHRVIQELLVDYYVKIQDTNVTSEDKKFHETLEQRLLVTELMRLGSPQEREIPPLL
GLEKADLLELMPLSEDFVWMRARLQQEVEEQKCKFTLLCYDPNSDADSETVKAQVWKLAEVLVGEQ
QQCQDAKSQQKEQMLLLEKSAAYSQVLLRCLTLLQRLLQEHLKTQSELDRIINAQYLEVKCGAMILKLR
MEELKILSDTYTVEKVEVHRLIRDREGAIHLEQDMENSRQVLSYEVLGEEFDRLVKEYTVLKQATEN
KRWALQEFKVVYR

TRTRPLEQKLISEEDLAANDILDYKDDDDKV

Tag:	C-Myc/DDK
Purity:	> 80% as determined by SDS-PAGE and Coomassie blue staining
Concentration:	>0.05 µg/µL as determined by microplate BCA method
Labeling Method:	Labeled with [U- ¹³ C ₆ , ¹⁵ N ₄]-L-Arginine and [U- ¹³ C ₆ , ¹⁵ N ₂]-L-Lysine
Buffer:	25 mM Tris-HCl, 100 mM glycine, pH 7.3
Storage:	Store at -80°C. Avoid repeated freeze-thaw cycles.
Stability:	Stable for 3 months from receipt of products under proper storage and handling conditions.
RefSeq:	<u>NP_060285</u>
RefSeq Size:	1649
RefSeq ORF:	1089
Synonyms:	C14orf94
Locus ID:	54930



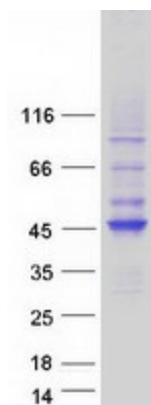
[View online »](#)

UniProt ID: [Q9H6D7](#)

Cytogenetics: 14q11.2

Summary: This gene encodes a subunit of the centrosome complex termed the human augmin complex. The encoded protein localizes to the spindle microtubules and may play a role in mitotic spindle assembly and maintenance of centrosome integrity during cell division. Alternate splicing results in multiple transcript variants. A pseudogene of this gene is found on chromosome 1. [provided by RefSeq, Oct 2009]

Product images:



Coomassie blue staining of purified HAUS4 protein (Cat# [TP300173]). The protein was produced from HEK293T cells transfected with HAUS4 cDNA clone (Cat# [RC200173]) using MegaTran 2.0 (Cat# [TT210002]).