

## Product datasheet for PH300162

### WDR5 (NM\_052821) Human Mass Spec Standard

#### Product data:

Product Type:	Mass Spec Standards
Description:	WDR5 MS Standard C13 and N15-labeled recombinant protein (NP_438172)
Species:	Human
Expression Host:	HEK293
Expression cDNA Clone or AA Sequence:	RC200162
Predicted MW:	36.6 kDa
Protein Sequence:	>RC200162 protein sequence Red=Cloning site Green=Tags(s)

MATEEKKPETEAARAQPTPSSSATQSKPTVPKPNYALKFTLAGHTKAVSSVKFSPNGEWLASSADKLIK  
IWGAYDGKFEKTIISGHKLGISDVAWSSDNLVSASDDKTLKIWDVSSGKCLKTLKGHSNYVFCNFPQ  
SNLIVSGSFDSESVRIWDVKTGKCLKTLPASDPVSAVHFNRDGLIVSSSYDGLCRIWDTASGQCLKTLI  
DDDNPPVSFVKFSPNGKYILAATLDNTLKLWDYSKGKCLKTYTGHKNEKYCIFANFSVTGGKWIVSGSED  
NLVYIWNLQTKIIVQKLGHTDVIISTACHPTENIIASAALENDKTIKLWKSDC

TRTRPLEQKLISEEDLAANDILDYKDDDDKV

Tag:	C-Myc/DDK
Purity:	> 80% as determined by SDS-PAGE and Coomassie blue staining
Concentration:	>0.05 µg/µL as determined by microplate BCA method
Labeling Method:	Labeled with [U- <sup>13</sup> C <sub>6</sub> , <sup>15</sup> N <sub>4</sub> ]-L-Arginine and [U- <sup>13</sup> C <sub>6</sub> , <sup>15</sup> N <sub>2</sub> ]-L-Lysine
Buffer:	25 mM Tris-HCl, 100 mM glycine, pH 7.3
Storage:	Store at -80°C. Avoid repeated freeze-thaw cycles.
Stability:	Stable for 3 months from receipt of products under proper storage and handling conditions.
RefSeq:	<a href="#">NP_438172</a>
RefSeq Size:	3078
RefSeq ORF:	1002
Synonyms:	BIG-3; CFAP89; SWD3
Locus ID:	11091



[View online »](#)

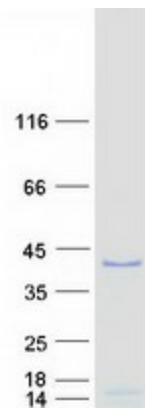
UniProt ID: [P61964](#)

Cytogenetics: 9q34.2

**Summary:** This gene encodes a member of the WD repeat protein family. WD repeats are minimally conserved regions of approximately 40 amino acids typically bracketed by gly-his and trp-asp (GH-WD), which may facilitate formation of heterotrimeric or multiprotein complexes. Members of this family are involved in a variety of cellular processes, including cell cycle progression, signal transduction, apoptosis, and gene regulation. This protein contains 7 WD repeats. Alternatively spliced transcript variants encoding the same protein have been identified. [provided by RefSeq, Jul 2008]

**Protein Families:** Druggable Genome

### Product images:



Coomassie blue staining of purified WDR5 protein (Cat# [TP300162]). The protein was produced from HEK293T cells transfected with WDR5 cDNA clone (Cat# [RC200162]) using MegaTran 2.0 (Cat# [TT210002]).