

Product datasheet for PH300153

GGA2 (NM_015044) Human Mass Spec Standard

Product data:

Product Type:	Mass Spec Standards
Description:	GGA2 MS Standard C13 and N15-labeled recombinant protein (NP_055859)
Species:	Human
Expression Host:	HEK293
Expression cDNA Clone or AA Sequence:	RC200153
Predicted MW:	67.2 kDa
Protein Sequence:	>RC200153 protein sequence Red=Cloning site Green=Tags(s)

MAATAVAAA VAGTESAQGPPGPAASLELWLNKATDPSMSEQDWSAIQNFCEQVNTDPNGPTHAPWLLAHK
IQSPQEKEALYALTVLEMCMNHCGEKFHSEVAKFRFLNELIKVLSPKYLGSWATGKVKGRVIEILFSWTV
WFPEDIKIRDAYQMLKKQGIKQDPKLPVDKILPPSPWPVKSSIFDADEEKSKLLTRLLKSNHPEDLQAA
NRLIKNLVKEEQEKSEKVKRVS AVEEVRSHVKVLQEMLSMYRRPGQAPPDQEALQVYERCEKLRPTLF
RLASDTDDDDALAEILQANDLLTQGVLLYKQVMEGRVTFGNRVTSSLGDIPVSRVFNQNPAGCMKTCPLI
DLEVDNGPAQMGTVVPSLLHQDLAALGISDAPVTGMVSGQNCCEEKRNPSSTLPGGGVQNPADRNLDD
LLSPQPAPCPLNYVSQKSVKPEVPPGTKSSPGWSWEAGPLAPSPSSQNTPLAQVFVPLESVKPSLPLLI
VYDRNGFRILLHFSQTGAPGHPEVQVLLL TMMSTAPQPVDIMFQVAVPKSMRVKLPASSSKLPAFSPL
MPPAVISQMLLLDNPHKEPIRLRYKLT FNQGGQPFSEVGEVKDFPD LAVLGAA

TRTRPLEQKLI SEEDLAANDILDYKDDDDKV

Tag:	C-Myc/DDK
Purity:	> 80% as determined by SDS-PAGE and Coomassie blue staining
Concentration:	>0.05 µg/µL as determined by microplate BCA method
Labeling Method:	Labeled with [U- ¹³ C ₆ , ¹⁵ N ₄]-L-Arginine and [U- ¹³ C ₆ , ¹⁵ N ₂]-L-Lysine
Buffer:	25 mM Tris-HCl, 100 mM glycine, pH 7.3
Storage:	Store at -80°C. Avoid repeated freeze-thaw cycles.
Stability:	Stable for 3 months from receipt of products under proper storage and handling conditions.
RefSeq:	NP_055859
RefSeq Size:	5973
RefSeq ORF:	1839



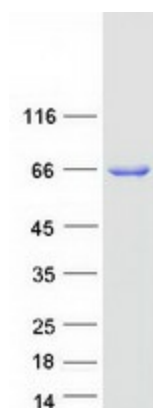
[View online »](#)

Synonyms: VEAR
Locus ID: 23062
UniProt ID: [Q9UJY4](#)
Cytogenetics: 16p12.2

Summary: This gene encodes a member of the Golgi-localized, gamma adaptin ear-containing, ARF-binding (GGA) family. This family includes ubiquitous coat proteins that regulate the trafficking of proteins between the trans-Golgi network and the lysosome. These proteins share an amino-terminal VHS domain which mediates sorting of the mannose 6-phosphate receptors at the trans-Golgi network. They also contain a carboxy-terminal region with homology to the ear domain of gamma-adaptins. This family member may play a significant role in cargo molecules regulation and clathrin-coated vesicle assembly. [provided by RefSeq, Jul 2008]

Protein Pathways: Lysosome

Product images:



Coomassie blue staining of purified GGA2 protein (Cat# [TP300153]). The protein was produced from HEK293T cells transfected with GGA2 cDNA clone (Cat# [RC200153]) using MegaTran 2.0 (Cat# [TT210002]).