

## Product datasheet for PH300152

### GMEB1 (NM\_024482) Human Mass Spec Standard

#### Product data:

Product Type:	Mass Spec Standards
Description:	GMEB1 MS Standard C13 and N15-labeled recombinant protein (NP_077808)
Species:	Human
Expression Host:	HEK293
Expression cDNA Clone or AA Sequence:	RC200152
Predicted MW:	61.3 kDa
Protein Sequence:	>RC200152 protein sequence Red=Cloning site Green=Tags(s)

MANAEVSVPGDVVVVPTTEGNEGENPEDTKTQVILQLQPVQQGIYEAGSENNTAVVAVETHTHKIEEGI  
DTGTIEANEDMEIAYPITCGESKAILLWKKFVCPGINVKCVKFNQQLISPKHFVHLAGKSTLKDWKRAIR  
LGGIMLRKMMSGQIDFYQHDKVCSNTRSTKFDLLISSARAPVPGQTSVVTPTPTADGSITQIAISEE  
SMEEAGLEWNSALTAAVTMATEEGVKKDSSEI SEDTLMFWKGIADVGLMEEVVCNIQKEIEELLRGVQQR  
LIQAPFQVTDAAVLNNVAHTFGLMDTVKKVLDNRRNQVEQGEEQFLYTLTDLERQLEEQQKQGDHRLKS  
QTVQNVVLMPVSTPKPPKRRLQRPASTTVLSPSPVQQPQFTVISPITITPVGQSFSGMGNIPVATLSQG  
SSPVTVHTLPSGPQLFRYATVVSSAKSSSPDVTIHPSSSLALLSSTAMQDGLGNMTTMVSPVELVAM  
ESGLTSAIQAVESTSEDGQTIIEIDPAPDPEAEDTEGKAVILETELRTTEKVVAAEMEEHQHVHNVVEIV  
LED

TRTRPLEQKLISEEDLAANDILDYKDDDDKV

Tag:	C-Myc/DDK
Purity:	> 80% as determined by SDS-PAGE and Coomassie blue staining
Concentration:	>0.05 µg/µL as determined by microplate BCA method
Labeling Method:	Labeled with [U- <sup>13</sup> C <sub>6</sub> , <sup>15</sup> N <sub>4</sub> ]-L-Arginine and [U- <sup>13</sup> C <sub>6</sub> , <sup>15</sup> N <sub>2</sub> ]-L-Lysine
Buffer:	25 mM Tris-HCl, 100 mM glycine, pH 7.3
Storage:	Store at -80°C. Avoid repeated freeze-thaw cycles.
Stability:	Stable for 3 months from receipt of products under proper storage and handling conditions.
RefSeq:	<a href="#">NP_077808</a>
RefSeq Size:	2661
RefSeq ORF:	1689



[View online »](#)

**Synonyms:** P96PIF; PIF96

**Locus ID:** 10691

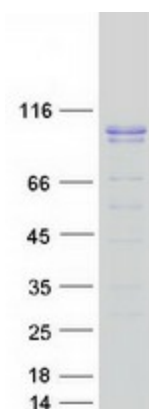
**UniProt ID:** [Q9Y692](#), [B1AT47](#)

**Cytogenetics:** 1p35.3

**Summary:** This gene encodes a member of KDWK gene family which associates with GMEB2 protein. The GMEB1-GMEB2 complex is essential for parvovirus DNA replication. Studies in rat for a similar gene suggest that this gene's role is to modulate the transactivation of the glucocorticoid receptor when it is bound to glucocorticoid response elements. Three alternative spliced transcript variants encoding different isoforms exist. [provided by RefSeq, Feb 2016]

**Protein Families:** Druggable Genome, Transcription Factors

### Product images:



Coomassie blue staining of purified GMEB1 protein (Cat# [TP300152]). The protein was produced from HEK293T cells transfected with GMEB1 cDNA clone (Cat# [RC200152]) using MegaTran 2.0 (Cat# [TT210002]).