

Product datasheet for PH300148

PIMREG (NM_019013) Human Mass Spec Standard

Product data:

Product Type:	Mass Spec Standards
Description:	FAM64A MS Standard C13 and N15-labeled recombinant protein (NP_061886)
Species:	Human
Expression Host:	HEK293
Expression cDNA Clone or AA Sequence:	RC200148
Predicted MW:	26.2 kDa
Protein Sequence:	>RC200148 protein sequence Red=Cloning site Green=Tags(s) MASRWQNMGTSVRRRSLQHQEQLDSKELQPVVSHQETSVGALGSLCRQFORRLPLRAVNLNLRAGPSWK RLETPEPGQQGLQAAARSAKSALGAVSQRIQESCSGSKWL VETQVKARRRKRGAQKSGSPHLSQKS TRL SGAAPAHSAADPWEKEHRLSVRMGSHAHPLRRSRREAAFRSPYSSTEPLCSPSESDSDLEPVGAGI QHLQKLSQELDEAIMAEESGDIVSLIHD TRTRPLEQKLI SEEDLAANDILDYKDDDDKV
Tag:	C-Myc/DDK
Purity:	> 80% as determined by SDS-PAGE and Coomassie blue staining
Concentration:	>0.05 µg/µL as determined by microplate BCA method
Labeling Method:	Labeled with [U- ¹³ C ₆ , ¹⁵ N ₄]-L-Arginine and [U- ¹³ C ₆ , ¹⁵ N ₂]-L-Lysine
Buffer:	25 mM Tris-HCl, 100 mM glycine, pH 7.3
Storage:	Store at -80°C. Avoid repeated freeze-thaw cycles.
Stability:	Stable for 3 months from receipt of products under proper storage and handling conditions.
RefSeq:	NP_061886
RefSeq Size:	1563
RefSeq ORF:	714
Synonyms:	CATS; FAM64A; RCS1
Locus ID:	54478
UniProt ID:	Q9BSJ6 , A0A0S2Z5C7



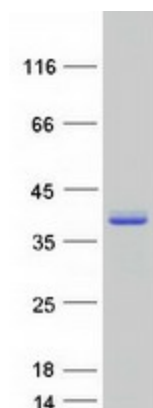
[View online »](#)

Cytogenetics: 17p13.2

Summary: During mitosis, may play a role in the control of metaphase-to-anaphase transition.
[UniProtKB/Swiss-Prot Function]

Protein Families: Druggable Genome

Product images:



Coomassie blue staining of purified PIMREG protein (Cat# [TP300148]). The protein was produced from HEK293T cells transfected with PIMREG cDNA clone (Cat# [RC200148]) using MegaTran 2.0 (Cat# [TT210002]).