

## Product datasheet for PH300145

### Ceramide synthase 2 (CERS2) (NM\_022075) Human Mass Spec Standard

#### Product data:

Product Type:	Mass Spec Standards
Description:	LASS2 MS Standard C13 and N15-labeled recombinant protein (NP_071358)
Species:	Human
Expression Host:	HEK293
Expression cDNA Clone or AA Sequence:	RC200145
Predicted MW:	44.9 kDa
Protein Sequence:	>RC200145 protein sequence Red=Cloning site Green=Tags(s)
	MLQTLYDYFWERLWLPVNLTWADLEDGRVYAKASDLYITLPLALLFLIVRYFFELYVATPLAALLNI KEKTRLRAPPNATLEHFYLTSGKQPKQVEVELLSRQSGLSGRQVERWFRRRRNQDRPSLLKFKREASWRF TFYLI AF IAGMAVIVDKPWFYDMKKVWEGYPIQSTIPSYWYMIELSFYWSLLFSIASDVKRKDFKEQI IHHVATIILISFSW FANYIRAGTLIMALHDSSDYLLLES AKMFNYAGWKNTCNNIFIVFAIVFIITRLVIL PFWILHCTLVYPLELYPAFFGYFFNSMMGVLQLLHIFWAYLILRMAHKFITGKLVEDERSDREETESSE GEEAAAGGGAKSRPLANGHPILNNHRKND
	TRTRPLEQKLI SEEDLAANDILDYKDDDDKV
Tag:	C-Myc/DDK
Purity:	> 80% as determined by SDS-PAGE and Coomassie blue staining
Concentration:	>0.05 µg/µL as determined by microplate BCA method
Labeling Method:	Labeled with [U- <sup>13</sup> C <sub>6</sub> , <sup>15</sup> N <sub>4</sub> ]-L-Arginine and [U- <sup>13</sup> C <sub>6</sub> , <sup>15</sup> N <sub>2</sub> ]-L-Lysine
Buffer:	25 mM Tris-HCl, 100 mM glycine, pH 7.3
Storage:	Store at -80°C. Avoid repeated freeze-thaw cycles.
Stability:	Stable for 3 months from receipt of products under proper storage and handling conditions.
RefSeq:	<a href="#">NP_071358</a>
RefSeq Size:	2504
RefSeq ORF:	1140
Synonyms:	L3; LASS2; SP260; TMSG1
Locus ID:	29956



[View online »](#)

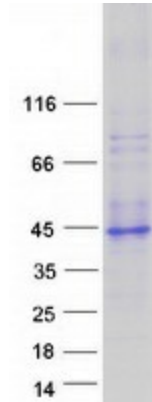
UniProt ID: [Q96G23](#)

Cytogenetics: 1q21.3

**Summary:** This gene encodes a protein that has sequence similarity to yeast longevity assurance gene 1. Mutation or overexpression of the related gene in yeast has been shown to alter yeast lifespan. The human protein may play a role in the regulation of cell growth. Alternatively spliced transcript variants encoding the same protein have been described. [provided by RefSeq, Jul 2008]

**Protein Families:** Transcription Factors, Transmembrane

### Product images:



Coomassie blue staining of purified CERS2 protein (Cat# [TP300145]). The protein was produced from HEK293T cells transfected with CERS2 cDNA clone (Cat# [RC200145]) using MegaTran 2.0 (Cat# [TT210002]).