

## Product datasheet for PH300139

### ENTR1 (NM\_006643) Human Mass Spec Standard

#### Product data:

Product Type:	Mass Spec Standards
Description:	SDCCAG3 MS Standard C13 and N15-labeled recombinant protein (NP_006634)
Species:	Human
Expression Host:	HEK293
Expression cDNA Clone or AA Sequence:	RC200139
Predicted MW:	45.5 kDa
Protein Sequence:	>RC200139 protein sequence Red=Cloning site Green=Tags(s)
	MSGYQRHPGATPLSRARSLAIPDAPAFYERRSCLPQLNCERPHGRDLDSPFFGIRPAFMCYVSPVLASV GDTDDRFEDLEEANPFSFREFLKTKNLGLSKEDPASRIYAKEASRHSGLDHNSPPSQTGGYGLEYQQPF FEDPTGAGDLLDGEEDDTGWSGAYLPSAIEQTHPERVPAGTSPCSTYLSFFSTPSELAGPESLPSWALS DTDSRVSPASPAGSPSADFVHGESLGRHLRTLQISYDALKDENSKLRRKLNEVQSFSEAQTEMVRTLE RKLEAKMIKEESDYHDLSEVVQQVEQNLELMTKRAVKAENHVVKLKQEISLLQAQVSNFQRENEALRCGQ GASLTVVKQNADVALQNLRVVMNSAQASIKQLVSGAETLNLVAEILKSIDRISEIKDEEEDS
	TRTRPLEQKLISEEDLAANDILDYKDDDDKV
Tag:	C-Myc/DDK
Purity:	> 80% as determined by SDS-PAGE and Coomassie blue staining
Concentration:	>0.05 µg/µL as determined by microplate BCA method
Labeling Method:	Labeled with [U- <sup>13</sup> C <sub>6</sub> , <sup>15</sup> N <sub>4</sub> ]-L-Arginine and [U- <sup>13</sup> C <sub>6</sub> , <sup>15</sup> N <sub>2</sub> ]-L-Lysine
Buffer:	25 mM Tris-HCl, 100 mM glycine, pH 7.3
Storage:	Store at -80°C. Avoid repeated freeze-thaw cycles.
Stability:	Stable for 3 months from receipt of products under proper storage and handling conditions.
RefSeq:	<a href="#">NP_006634</a>
RefSeq Size:	2321
RefSeq ORF:	1236
Synonyms:	NY-CO-3; SDCCAG3; SDDAG3
Locus ID:	10807



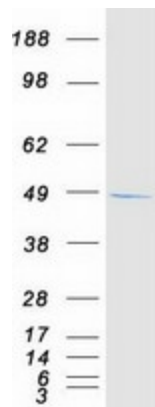
[View online »](#)

UniProt ID: [Q96C92](#)

Cytogenetics: 9q34.3

**Summary:** Endosome-associated protein that plays a role in membrane receptor sorting, cytokinesis and ciliogenesis (PubMed:23108400, PubMed:25278552, PubMed:27767179). Involved in the endosome-to-plasma membrane trafficking and recycling of SNX27-retromer-dependent cargo proteins, such as GLUT1 (PubMed:25278552). Involved in the regulation of cytokinesis; the function may involve PTPN13 and GIT1 (PubMed:23108400). Plays a role in the formation of cilia (PubMed:27767179). Involved in cargo protein localization, such as PKD2, at primary cilia (PubMed:27767179). Involved in the presentation of the tumor necrosis factor (TNF) receptor TNFRSF1A on the cell surface, and hence in the modulation of the TNF-induced apoptosis (By similarity).[UniProtKB/Swiss-Prot Function]

### Product images:



Coomassie blue staining of purified ENTR1 protein (Cat# [TP300139]). The protein was produced from HEK293T cells transfected with ENTR1 cDNA clone (Cat# [RC200139]) using MegaTran 2.0 (Cat# [TT210002]).