

Product datasheet for PH300132

REC8 (NM_005132) Human Mass Spec Standard

Product data:

Product Type:	Mass Spec Standards
Description:	REC8 MS Standard C13 and N15-labeled recombinant protein (NP_005123)
Species:	Human
Expression Host:	HEK293
Expression cDNA Clone or AA Sequence:	RC200132
Predicted MW:	62.6 kDa
Protein Sequence:	>RC200132 protein sequence Red=Cloning site Green=Tags(s)

MFYYPNVLQRHTGCFATIWLAATRGSRLVKREYLRVNVVKTCEEILNYVLVRVQPPQGLPRPRFSLYLS
AQLQIGVIRVYSQQCQYLVEDIQHILERLHRAQLQIRIDMETELPSLLLPNHLAMMETLEDAPDPFFGMM
SVDPRLPSPFDIPQIRHLLLEAAIPERVEEIPPEVPTPREPERIPVTVLPPEAITILEAEPIRMLEIEGE
RELPEVSRRELDLLIAEEEEAILLEIPRLPPPAPAEVEGIGEALGPEELRLTGWEPGALLMEVTPPEELR
LPAPPSPERRPPVPPPPRRRRRRLLFWDKETQISPEKFQEQLQTRAHCWECMPVQPPERTIRGPAELFR
TPTLSGWLPELLGLWTHCAQPPPKALRRELPEAAAAEEERRKIEVPSEIEVPREALEPSVPLMVSLEIS
LEAAAAEEKSRISLIPPEERWAWPEVEAPEAPALPVVPELPEVPMEMPLVLPELELLSLEAVHRAVALEL
QANREPDFSSLVSPLSPRRMAARVFYLLLVLSAQQILHVKQEKPYGRLLIQPGPRFH

TRTRPLEQKLISEEDLAANDILDYKDDDDKV

Tag:	C-Myc/DDK
Purity:	> 80% as determined by SDS-PAGE and Coomassie blue staining
Concentration:	>0.05 µg/µL as determined by microplate BCA method
Labeling Method:	Labeled with [U- ¹³ C ₆ , ¹⁵ N ₄]-L-Arginine and [U- ¹³ C ₆ , ¹⁵ N ₂]-L-Lysine
Buffer:	25 mM Tris-HCl, 100 mM glycine, pH 7.3
Storage:	Store at -80°C. Avoid repeated freeze-thaw cycles.
Stability:	Stable for 3 months from receipt of products under proper storage and handling conditions.
RefSeq:	NP_005123
RefSeq Size:	2253
RefSeq ORF:	1641



[View online »](#)

Synonyms: HR21spB; REC8L1; Rec8p

Locus ID: 9985

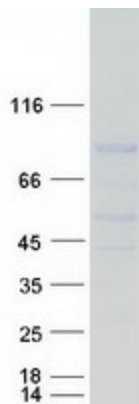
UniProt ID: [O95072](#)

Cytogenetics: 14q12

Summary: This gene encodes a member of the kleisin family of SMC (structural maintenance of chromosome) protein partners. The protein localizes to the axial elements of chromosomes during meiosis in both oocytes and spermatocytes. In the mouse, the homologous protein is a key component of the meiotic cohesion complex, which regulates sister chromatid cohesion and recombination between homologous chromosomes. Multiple alternatively spliced variants, encoding the same protein, have been found for this gene. [provided by RefSeq, Jul 2008]

Protein Pathways: Oocyte meiosis

Product images:



Coomassie blue staining of purified REC8 protein (Cat# [TP300132]). The protein was produced from HEK293T cells transfected with REC8 cDNA clone (Cat# [RC200132]) using MegaTran 2.0 (Cat# [TT210002]).