

## Product datasheet for PH300129

### C12orf11 (ASUN) (NM\_018164) Human Mass Spec Standard

#### Product data:

Product Type:	Mass Spec Standards
Description:	C12orf11 MS Standard C13 and N15-labeled recombinant protein (NP_060634)
Species:	Human
Expression Host:	HEK293
Expression cDNA Clone or AA Sequence:	RC200129
Predicted MW:	80.2 kDa
Protein Sequence:	>RC200129 protein sequence <span style="color: red;">Red</span> =Cloning site <span style="color: green;">Green</span> =Tags(s)

MKIFSESHKTVFVVDHCPYMAESCRQHVEFDMLVKNRTQGIPLAPISKSLWTCSVESSMEYCRIMYDIF  
 PFKKLVNFIVSDSGAHLNSWTQEDQNLQELMAALAAVGPPNPRADPECCSILHGLVAAVETLCKITEYQ  
 HEARTLLMENAERVGNRGRIICITNAKSDSHVRMLEDCVQETIHEHNKLAANSDHLMQIQKCELVIHTY  
 PVGEDSLVSDRSKKELSPVLTSEVHVRAGRHLATKLNILVQQHFDLASTTITNIPMKEEQHANTSANYD  
 VELLHHKDAHVDLFKSGDHLGGGSRGSKETITLKWCTPRTNNIELHYCTGAYRISPVDVNSRPSSCL  
 TNFLLNGRSVLLEQPRKSGSKVISHMLSSHGGEIFLHVLSSRSILEDPPSISEGCGGRVTDYRITDFGE  
 FMRENRLTPFLDPYKIDGSLEVPLERAKDQLEKHTRYWPMIISQTTIFNMQAVVPLASIVKESLTEED  
 VLNCQKTIYNLVDMERKNDPLPISTVGTRGKGPKRDEQYRIMWNELETLVRAHINNSEKHQRVLECLMAC  
 RSKPPEEEERKKRGRKREDKEDKSEKAVKDYEQKSWQDSERLKGILERGKEELAEAEI IKDSPDSPEPP  
 NKKPLVEMDETPQVEKSGPVSLLSLWSNRINTANSRKHQEFAGRLNSVNNRAELYQHLKEENGMETTKN  
 GKASRQ

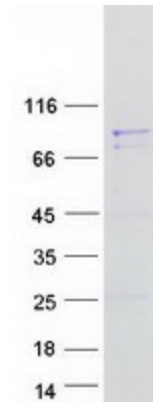
TRTRPLEQKLISEEDLAANDILDYKDDDDKV

Tag:	C-Myc/DDK
Purity:	> 80% as determined by SDS-PAGE and Coomassie blue staining
Concentration:	>0.05 µg/µL as determined by microplate BCA method
Labeling Method:	Labeled with [U- <sup>13</sup> C <sub>6</sub> , <sup>15</sup> N <sub>4</sub> ]-L-Arginine and [U- <sup>13</sup> C <sub>6</sub> , <sup>15</sup> N <sub>2</sub> ]-L-Lysine
Buffer:	25 mM Tris-HCl, 100 mM glycine, pH 7.3
Storage:	Store at -80°C. Avoid repeated freeze-thaw cycles.
Stability:	Stable for 3 months from receipt of products under proper storage and handling conditions.
RefSeq:	<a href="#">NP_060634</a>


[View online »](#)

RefSeq Size:	2988
RefSeq ORF:	2118
Synonyms:	ASUN; C12orf11; GCT1; Mat89Bb; NET48; SPATA30
Locus ID:	55726
UniProt ID:	<a href="#">Q9NVM9</a>
Cytogenetics:	12p11.23
Summary:	Crucial regulator of the mitotic cell cycle and development. At prophase, required for dynein anchoring to the nuclear envelope important for proper centrosome-nucleus coupling. At G2/M phase, may be required for proper spindle formation and execution of cytokinesis. Probable component of the Integrator (INT) complex, a complex involved in the small nuclear RNAs (snRNA) U1 and U2 transcription and in their 3'-box-dependent processing (PubMed:23904267).[UniProtKB/Swiss-Prot Function]

### Product images:



Coomassie blue staining of purified INTS13 protein (Cat# [TP300129]). The protein was produced from HEK293T cells transfected with INTS13 cDNA clone (Cat# [RC200129]) using MegaTran 2.0 (Cat# [TT210002]).