

Product datasheet for PH300120

CNDP2 (NM_018235) Human Mass Spec Standard

Product data:

Product Type:	Mass Spec Standards
Description:	CNDP2 MS Standard C13 and N15-labeled recombinant protein (NP_060705)
Species:	Human
Expression Host:	HEK293
Expression cDNA Clone or AA Sequence:	RC200120
Predicted MW:	52.9 kDa
Protein Sequence:	>RC200120 protein sequence Red=Cloning site Green=Tags(s)

MAALTTLFKYIDENQDRYIKKLAKWVAIQSVSAWPEKRGIEIRRMEEVAAADVQKLGGSVELVDIGKQKLP
DGSEIPLPPILLGRLGSDPQKKTVCIIYGHLDVQPAALDGDWSEPFTLVERDGKLYGRGSTDDKGPVAGW
INALEAYQKTGQEIPVNVRFCLGMEESGSEGLDELIFARKDTFFKDVDYVCISDNYWLGKKKPCITYGL
RGICYFFIEVECSNKDLHSGVYGGSVHEAMTDLILLMGSVLVDKRGNILIPGINEA VAAVTEEEHKL YDDI
DFDIEEF AKDVGAQILLHSHK KDILMHRWRYP SLHLHGIEGAFSGSGAKTVIPRKVVGKFSIRLVPNMTP
E VVGEQVTSYLTKKFAELRSPNEFKVYMGHGKPPWVSDF SHPHYLAGRRAMKTVFGVEPDLTREGGSIPV
TLTFQEATGKNVMLLPVGSADDDGAHSQNEKLNRYNYIEGTKMLAAYLYEVSQ LKD

TRTRPLEQKLI SEEDLAANDILDYKDDDDKV

Tag:	C-Myc/DDK
Purity:	> 80% as determined by SDS-PAGE and Coomassie blue staining
Concentration:	>0.05 µg/µL as determined by microplate BCA method
Labeling Method:	Labeled with [U- ¹³ C ₆ , ¹⁵ N ₄]-L-Arginine and [U- ¹³ C ₆ , ¹⁵ N ₂]-L-Lysine
Buffer:	25 mM Tris-HCl, 100 mM glycine, pH 7.3
Storage:	Store at -80°C. Avoid repeated freeze-thaw cycles.
Stability:	Stable for 3 months from receipt of products under proper storage and handling conditions.
RefSeq:	<u>NP_060705</u>
RefSeq Size:	5089
RefSeq ORF:	1425
Synonyms:	CN2; CPGL; HEL-S-13; HsT2298; PEPA



[View online »](#)

Locus ID: 55748

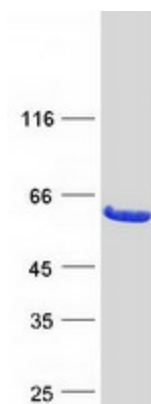
UniProt ID: [Q96KP4](#)

Cytogenetics: 18q22.3

Summary: CNDP2, also known as tissue carnosinase and peptidase A (EC 3.4.13.18), is a nonspecific dipeptidase rather than a selective carnosinase (Teufel et al., 2003 [PubMed 12473676]). [supplied by OMIM, Mar 2008]

Protein Families: Protease

Product images:



Coomassie blue staining of purified CNDP2 protein (Cat# [TP300120]). The protein was produced from HEK293T cells transfected with CNDP2 cDNA clone (Cat# [RC200120]) using MegaTran 2.0 (Cat# [TT210002]).