

Product datasheet for PH300110

CBF19L1 (NM_018294) Human Mass Spec Standard

Product data:

Product Type:	Mass Spec Standards
Description:	CBF19L1 MS Standard C13 and N15-labeled recombinant protein (NP_060764)
Species:	Human
Expression Host:	HEK293
Expression cDNA Clone or AA Sequence:	RC200110
Predicted MW:	60.6 kDa
Protein Sequence:	>RC200110 protein sequence Red=Cloning site Green=Tags(s)

MAQKPLRLLACGDVEGKFDILFNVRQAIQKSGNFDLLL CVGNFFGSTQDAEWEEYKTGIKKVPIQTYVL
GANNQETVKYFQDADGCELAENITYLGRKGIFTGSSGLQIVYLSGTESLNEPVPGYFSFKDVSSLRMML
CTTSQFKGVDILLTSPWPKCVGNFGNSSGEVDTKKCGSALVSSLATGLKPRYHFAALEKTYERLPYRNH
IILQENAHATRFIALANVGNPEKKKYLYAFSIVPMKLMDAEELVKQPPDVTENPYRKSQGEASIGKQIL
APVEESACQFFFDLNEKQGRKRSSTGRDSKSSPHPKQPRKPPQPPGPCWFCLASPEVEKHLVNVIGTHCY
LALAKGGLSDDHVLILPIGHYQSVVELSAEVVEEVEKYKATLRRFFKSRGKWCVVFERNYKSHHLQLQVI
PVPIISCSTDDIKDAFITQAQEQIELLEIPEHSDIKQIAQPGAAFYVELDTGEKLFHRIKKNFPLQFG
REVLASEAILNVPDKSDWRQCQISKEDEETLARRFRKDFEPYDFTLDD

SGPTRTRPLEQKLI SEEDLAANDILDYKDDDDKV

Tag:	C-Myc/DDK
Purity:	> 80% as determined by SDS-PAGE and Coomassie blue staining
Concentration:	>0.05 µg/µL as determined by microplate BCA method
Labeling Method:	Labeled with [U- ¹³ C ₆ , ¹⁵ N ₄]-L-Arginine and [U- ¹³ C ₆ , ¹⁵ N ₂]-L-Lysine
Buffer:	25 mM Tris-HCl, 100 mM glycine, pH 7.3
Storage:	Store at -80°C. Avoid repeated freeze-thaw cycles.
Stability:	Stable for 3 months from receipt of products under proper storage and handling conditions.
RefSeq:	<u>NP_060764</u>
RefSeq Size:	2633
RefSeq ORF:	1614



[View online »](#)

Synonyms: C19L1; hDrn1; SCAR17

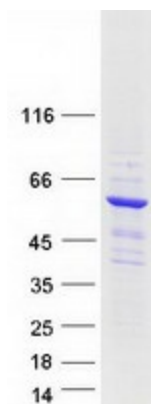
Locus ID: 55280

UniProt ID: [Q69YN2](#), [A0A0S2Z5E9](#)

Cytogenetics: 10q24.31

Summary: This gene encodes a member of the CWF19 protein family. Mutations in this gene have been associated with autosomal recessive spinocerebellar ataxia-17 and mild cognitive disability. Alternative splicing results in multiple transcript variants. [provided by RefSeq, Dec 2014]

Product images:



Coomassie blue staining of purified CWF19L1 protein (Cat# [TP300110]). The protein was produced from HEK293T cells transfected with CWF19L1 cDNA clone (Cat# [RC200110]) using MegaTran 2.0 (Cat# [TT210002]).