

Product datasheet for PH300106

Bif (SH3GLB1) (NM_016009) Human Mass Spec Standard

Product data:

Product Type:	Mass Spec Standards
Description:	SH3GLB1 MS Standard C13 and N15-labeled recombinant protein (NP_057093)
Species:	Human
Expression Host:	HEK293
Expression cDNA Clone or AA Sequence:	RC200106
Predicted MW:	40.8 kDa
Protein Sequence:	>RC200106 protein sequence Red=Cloning site Green=Tags(s) <p>MNIMDFNVKLAADAGTFLSRAVQFTEEKLGQAEKTELDHAHLENLLSKAECKIWTKEIMKQTEVLLQPN PNARIEEFVYKELDRKAPSRINPELLGQYMIDAGTEFGPGTAYGNALIKCGETQKRIGTADRELIQTSA LNFLTPLRNFIEGDYKTIAKERKLLQNKRLDLDAKTRLKAKAAETRNSSEQLRITQSEFDRQAEITR LLEGISSTHAHHLRCLNDFVEAQMYYAQCYQYMLDLQKQLGSFSPNYLSNNNQTSVTPVPSVLPNAIG SSAMASTSGLVITSPSNLSDLKECSGRKARVL YDYDAANSTELSLLADEVITVFSVVGMSDWMGERG NQKGVPIITYLELLN</p> <p>TRTRPLEQKLI SEEDLAANDILDYKDDDDKV</p>
Tag:	C-Myc/DDK
Purity:	> 80% as determined by SDS-PAGE and Coomassie blue staining
Concentration:	>0.05 µg/µL as determined by microplate BCA method
Labeling Method:	Labeled with [U- ¹³ C ₆ , ¹⁵ N ₄]-L-Arginine and [U- ¹³ C ₆ , ¹⁵ N ₂]-L-Lysine
Buffer:	25 mM Tris-HCl, 100 mM glycine, pH 7.3
Storage:	Store at -80°C. Avoid repeated freeze-thaw cycles.
Stability:	Stable for 3 months from receipt of products under proper storage and handling conditions.
RefSeq:	<u>NP_057093</u>
RefSeq Size:	6382
RefSeq ORF:	1095
Synonyms:	Bif-1; CGI-61; dj612B15.2; PPP1R70
Locus ID:	51100



[View online »](#)

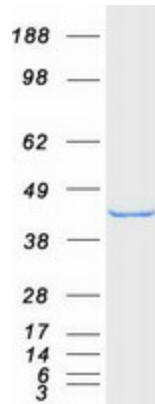
UniProt ID: [Q9Y371](#), [A0A140VJU5](#)

Cytogenetics: 1p22.3

Summary: This gene encodes a SRC homology 3 domain-containing protein. The encoded protein interacts with the proapoptotic member of the Bcl-2 family, Bcl-2-associated X protein (Bax) and may be involved in regulating apoptotic signaling pathways. This protein may also be involved in maintaining mitochondrial morphology. Alternate splicing results in multiple transcript variants. [provided by RefSeq, Sep 2011]

Protein Pathways: Endocytosis

Product images:



Coomassie blue staining of purified SH3GLB1 protein (Cat# [TP300106]). The protein was produced from HEK293T cells transfected with SH3GLB1 cDNA clone (Cat# [RC200106]) using MegaTran 2.0 (Cat# [TT210002]).