

Product datasheet for PH300102

NTAL (LAT2) (NM_032463) Human Mass Spec Standard

Product data:

Product Type:	Mass Spec Standards
Description:	LAT2 MS Standard C13 and N15-labeled recombinant protein (NP_115852)
Species:	Human
Expression Host:	HEK293
Expression cDNA Clone or AA Sequence:	RC200102
Predicted MW:	26.6 kDa
Protein Sequence:	>RC200102 protein sequence Red=Cloning site Green=Tags(s) MSSGTELLWPGAALLVLLGVAASLCVRC SRPGAKRSEKIYQQRSLREDQQSFTGSRTYSLVGQAWPGPLA DMAPTRKDKLLQFYPSLEDPASSRYQNFSGSRHGSEEAYIDPIAMEYYNWGRFSKPPEDDDANSYENVL ICKQKTTTETGAQQEGIGGLCRGDLSSLALKTGPTSGLCPASPEEDEESEDYQNSASIQWRESRKVMG QLQREASPGVPVGSPEDEEDGEPTYVNGEVAATEA TRTRPLEQKLI SEEDLAANDILDYKDDDDKV
Tag:	C-Myc/DDK
Purity:	> 80% as determined by SDS-PAGE and Coomassie blue staining
Concentration:	>0.05 µg/µL as determined by microplate BCA method
Labeling Method:	Labeled with [U- ¹³ C ₆ , ¹⁵ N ₄]-L-Arginine and [U- ¹³ C ₆ , ¹⁵ N ₂]-L-Lysine
Buffer:	25 mM Tris-HCl, 100 mM glycine, pH 7.3
Storage:	Store at -80°C. Avoid repeated freeze-thaw cycles.
Stability:	Stable for 3 months from receipt of products under proper storage and handling conditions.
RefSeq:	NP_115852
RefSeq Size:	2129
RefSeq ORF:	729
Synonyms:	HSPC046; LAB; NTAL; WBSCR5; WBSCR15; WSCR5
Locus ID:	7462
UniProt ID:	Q9GZY6



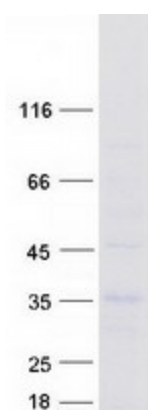
[View online »](#)

Cytogenetics: 7q11.23

Summary: This gene is one of the contiguous genes at 7q11.23 commonly deleted in Williams syndrome, a multisystem developmental disorder. This gene consists of at least 14 exons, and its alternative splicing generates 3 transcript variants, all encoding the same protein. [provided by RefSeq, Jul 2008]

Protein Families: Transmembrane

Product images:



Coomassie blue staining of purified LAT2 protein (Cat# [TP300102]). The protein was produced from HEK293T cells transfected with LAT2 cDNA clone (Cat# [RC200102]) using MegaTran 2.0 (Cat# [TT210002]).