

## Product datasheet for PH300077

### WDR12 (NM\_018256) Human Mass Spec Standard

#### Product data:

Product Type:	Mass Spec Standards
Description:	WDR12 MS Standard C13 and N15-labeled recombinant protein (NP_060726)
Species:	Human
Expression Host:	HEK293
Expression cDNA Clone or AA Sequence:	RC200077
Predicted MW:	47.7 kDa
Protein Sequence:	>RC200077 protein sequence <span style="color: red;">Red</span> =Cloning site <span style="color: green;">Green</span> =Tags(s)

MAQLQTRFYTDNKKYAVDDVPFSIPAASEIADLSNIINKLLKDKNEFHKHVEFDLIKQQLRMPLDKHM  
 EMENISSEEVVEIEYVEKYTAPQPEQCMFHDDWISSIKGAEWILTGSYDKTSRIWSLEGKSIMTIVGHT  
 DVYKDVAVVKKDSLSCLLLSASMDQTILLWEWNVERNKV KALHCCRGHAGSVDSIAVDGSGTKFCSGSWD  
 KMLKIWSTVPTDEEDEMEESTNRPRKKQKTEQLGLTRTPIVTL SGHMEAVSSVLWSDAEEIC SASWDHTI  
 RVWDVESGSLKSTLTGNKVFNCISYSPLCKRLASGSDRHIRLWDPRTKDGLVSLSLTSGTWVTSVKW  
 SPTHEQQLISGSLDNIVKLWDTRSCAPLYDLAAHEDKVL SVDWTDGLLLSGGADNKLYSYRYSPTTSH  
 VGA

TRTRPLEQKLISEEDLAANDILDYKDDDDKV

Tag:	C-Myc/DDK
Purity:	> 80% as determined by SDS-PAGE and Coomassie blue staining
Concentration:	>0.05 µg/µL as determined by microplate BCA method
Labeling Method:	Labeled with [U- <sup>13</sup> C <sub>6</sub> , <sup>15</sup> N <sub>4</sub> ]-L-Arginine and [U- <sup>13</sup> C <sub>6</sub> , <sup>15</sup> N <sub>2</sub> ]-L-Lysine
Buffer:	25 mM Tris-HCl, 100 mM glycine, pH 7.3
Storage:	Store at -80°C. Avoid repeated freeze-thaw cycles.
Stability:	Stable for 3 months from receipt of products under proper storage and handling conditions.
RefSeq:	<u><a href="#">NP_060726</a></u>
RefSeq Size:	2299
RefSeq ORF:	1269
Synonyms:	YTM1


[View online »](#)

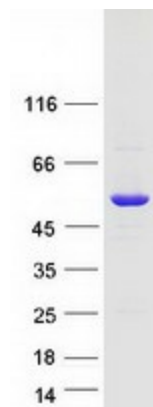
**Locus ID:** 55759

**UniProt ID:** [Q9GZL7](#), [Q53T99](#)

**Cytogenetics:** 2q33.2

**Summary:** This gene encodes a member of the WD repeat protein family. WD repeats are minimally conserved regions of approximately 40 amino acids typically bracketed by gly-his and trp-aspartate (GH-WD), which may facilitate formation of heterotrimeric or multiprotein complexes. Members of this family are involved in a variety of cellular processes, including cell cycle progression, signal transduction, apoptosis, and gene regulation. This protein is highly similar to the mouse WD repeat domain 12 protein at the amino acid level. The protein encoded by this gene is a component of a nucleolar protein complex that affects maturation of the large ribosomal subunit.[provided by RefSeq, Dec 2008]

## Product images:



Coomassie blue staining of purified WDR12 protein (Cat# [TP300077]). The protein was produced from HEK293T cells transfected with WDR12 cDNA clone (Cat# [RC200077]) using MegaTran 2.0 (Cat# [TT210002]).