

Product datasheet for PH300075

CUTA (NM_001014838) Human Mass Spec Standard

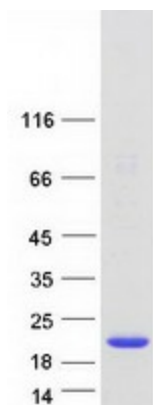
Product data:

Product Type:	Mass Spec Standards
Description:	CUTA MS Standard C13 and N15-labeled recombinant protein (NP_001014838)
Species:	Human
Expression Host:	HEK293
Expression cDNA Clone or AA Sequence:	RC200075
Predicted MW:	16.8 kDa
Protein Sequence:	>RC200075 protein sequence Red =Cloning site Green =Tags(s) MPALLPVASRLLLLPRVLLTMASGSPPTQPSPASDSGSGYVPGSVSAAFVTCPNEKVAKEIARAVVEKRL AACVNLIPQITSIYEWKGIIEEDSEVLMMIKTQSSLVPALTDVFRSVHPYEVAEVIALPVEQGNFPYLQW VRQVTESVSDSITVLP TRTRPLEQKLI SEEDLAANDILDYKDDDDKV
Tag:	C-Myc/DDK
Purity:	> 80% as determined by SDS-PAGE and Coomassie blue staining
Concentration:	>0.05 µg/µL as determined by microplate BCA method
Labeling Method:	Labeled with [U- ¹³ C ₆ , ¹⁵ N ₄]-L-Arginine and [U- ¹³ C ₆ , ¹⁵ N ₂]-L-Lysine
Buffer:	25 mM Tris-HCl, 100 mM glycine, pH 7.3
Storage:	Store at -80°C. Avoid repeated freeze-thaw cycles.
Stability:	Stable for 3 months from receipt of products under proper storage and handling conditions.
RefSeq:	NP_001014838
RefSeq Size:	1041
RefSeq ORF:	468
Synonyms:	ACHAP; C6orf82
Locus ID:	51596
UniProt ID:	O60888



[View online »](#)

Cytogenetics:	6p21.32
Summary:	May form part of a complex of membrane proteins attached to acetylcholinesterase (AChE). [UniProtKB/Swiss-Prot Function]
Protein Families:	Transmembrane

Product images:

Coomassie blue staining of purified CUTA protein (Cat# [TP300075]). The protein was produced from HEK293T cells transfected with CUTA cDNA clone (Cat# [RC200075]) using MegaTran 2.0 (Cat# [TT210002]).