

## Product datasheet for PH300063

### IMPA2 (NM\_014214) Human Mass Spec Standard

#### Product data:

Product Type:	Mass Spec Standards
Description:	IMPA2 MS Standard C13 and N15-labeled recombinant protein (NP_055029)
Species:	Human
Expression Host:	HEK293
Expression cDNA Clone or AA Sequence:	RC200063
Predicted MW:	31.3 kDa
Protein Sequence:	>RC200063 protein sequence Red=Cloning site Green=Tags(s)  MKPSGEDQAALAAGPWEECFQAAVQLALRAGQIIRKALTEEKRVSTKTSAADLVTETDHLVEDLIISELR ERFPSHRFIAEEAAASGAKCVLTHSPTWIIDPIDGTCNFVHRFPTVAVSIGFAVRQELEFGVIYHCTEER LYTGRRGRGAFNCQRLRVSGETDLKALVLTETGPKRDPATLKLFLSNMERLLHAKAHGVRVIGSSTLA LCHLASGAADAYYQFGLHCWDLAAATVIIREAGGIVIDTSGGPLDLMACRVVAASTREMAMLIAQALQTI NYGRDDEK  TRTRPLEQKLISEEDLAANDILDYKDDDDKV
Tag:	C-Myc/DDK
Purity:	> 80% as determined by SDS-PAGE and Coomassie blue staining
Concentration:	>0.05 µg/µL as determined by microplate BCA method
Labeling Method:	Labeled with [U- <sup>13</sup> C <sub>6</sub> , <sup>15</sup> N <sub>4</sub> ]-L-Arginine and [U- <sup>13</sup> C <sub>6</sub> , <sup>15</sup> N <sub>2</sub> ]-L-Lysine
Buffer:	25 mM Tris-HCl, 100 mM glycine, pH 7.3
Storage:	Store at -80°C. Avoid repeated freeze-thaw cycles.
Stability:	Stable for 3 months from receipt of products under proper storage and handling conditions.
RefSeq:	<a href="#">NP_055029</a>
RefSeq Size:	1537
RefSeq ORF:	864
Locus ID:	3613
UniProt ID:	<a href="#">O14732</a>



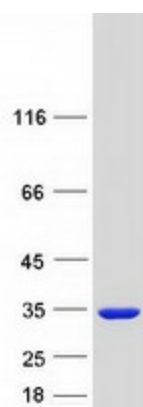
[View online »](#)

Cytogenetics: 18p11.21

**Summary:** This locus encodes an inositol monophosphatase. The encoded protein catalyzes the dephosphorylation of inositol monophosphate and plays an important role in phosphatidylinositol signaling. This locus may be associated with susceptibility to bipolar disorder. [provided by RefSeq, Jan 2011]

**Protein Pathways:** Inositol phosphate metabolism, Metabolic pathways, Phosphatidylinositol signaling system

**Product images:**



Coomassie blue staining of purified IMPA2 protein (Cat# [TP300063]). The protein was produced from HEK293T cells transfected with IMPA2 cDNA clone (Cat# [RC200063]) using MegaTran 2.0 (Cat# [TT210002]).